



AKAI

**CD/MP3/WMA/
USB/MMC/SD-RECIVER**

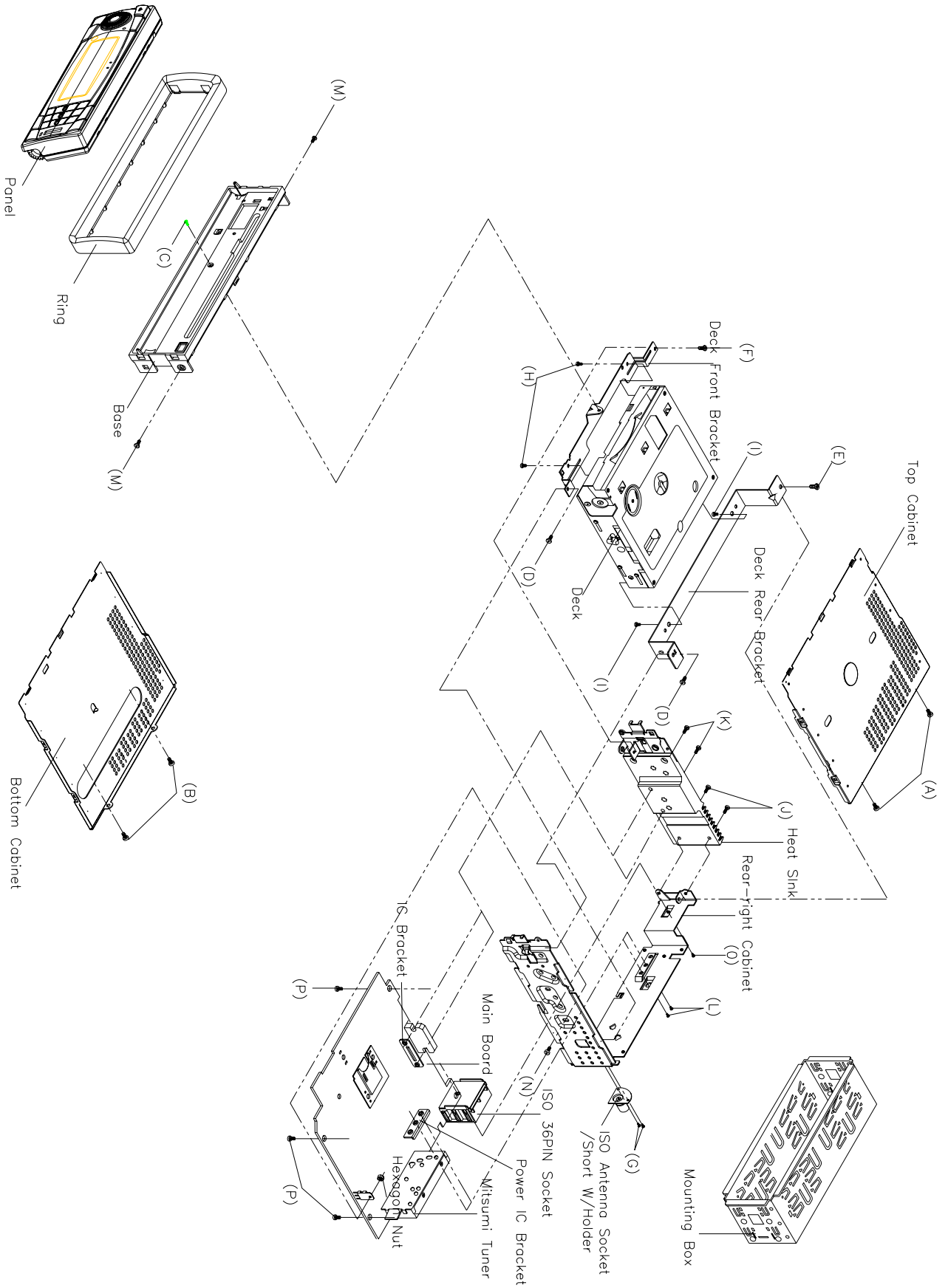
Model:
ACR-224MMU

SERVICE MANUAL

DISASSEMBLY INSTRUCTIONS

1. Using the unlock key that came with the unit or a similar tool, unlock the Mounting Box and remove toward the rear of the unit.
2. Remove two screws (A) located on the rear of the top cabinet then remove the Top Cabinet.
3. Remove two screws (B) located on the rear of the bottom cabinet then remove the Bottom Cabinet.
4. Take out the Front Panel and the Ring.
Remove the screws(C) from on the front side of the Base.
5. Remove two screws (D) from on the right side of the Rear-right Cabinet.
Remove the screw (E) from on the left side of the Rear-right Cabinet and the screw (F) on the right side of the heat sink.
6. Remove two screws (G) from on the back of the Rear-right bracket then remove the ISO Antenna Socket/Short W/Holder.
7. Remove two screws (H) from under the deck front bracket then remove the Deck Front Bracket.
Remove two screws (I) from under the deck rear bracket then remove the Deck Rear Bracket and the Deck.
8. Remove two screws (J) from on the left side of the heat sink.
9. Remove two screws (K) from on the left side of the heat sink then remove the IC Bracket.
10. Remove two screws (L) from on the rear side of Rear-right Cabinet then remove the Power IC Bracket.
11. Remove two screws (M) from each side of the base then remove the Base.
12. Remove the screw (N) from right side of the Rear-right bracket then remove the Hexagon Nut..
13. Remove the screw (O) from on the back of the Rear-right then remove ISO 36PIN Socket.
14. Remove three screws (P) from under the main board then remove the Heat Sink, Rear-right Bracket and the Main Board.

DISASSEMBLY DIAGRAM



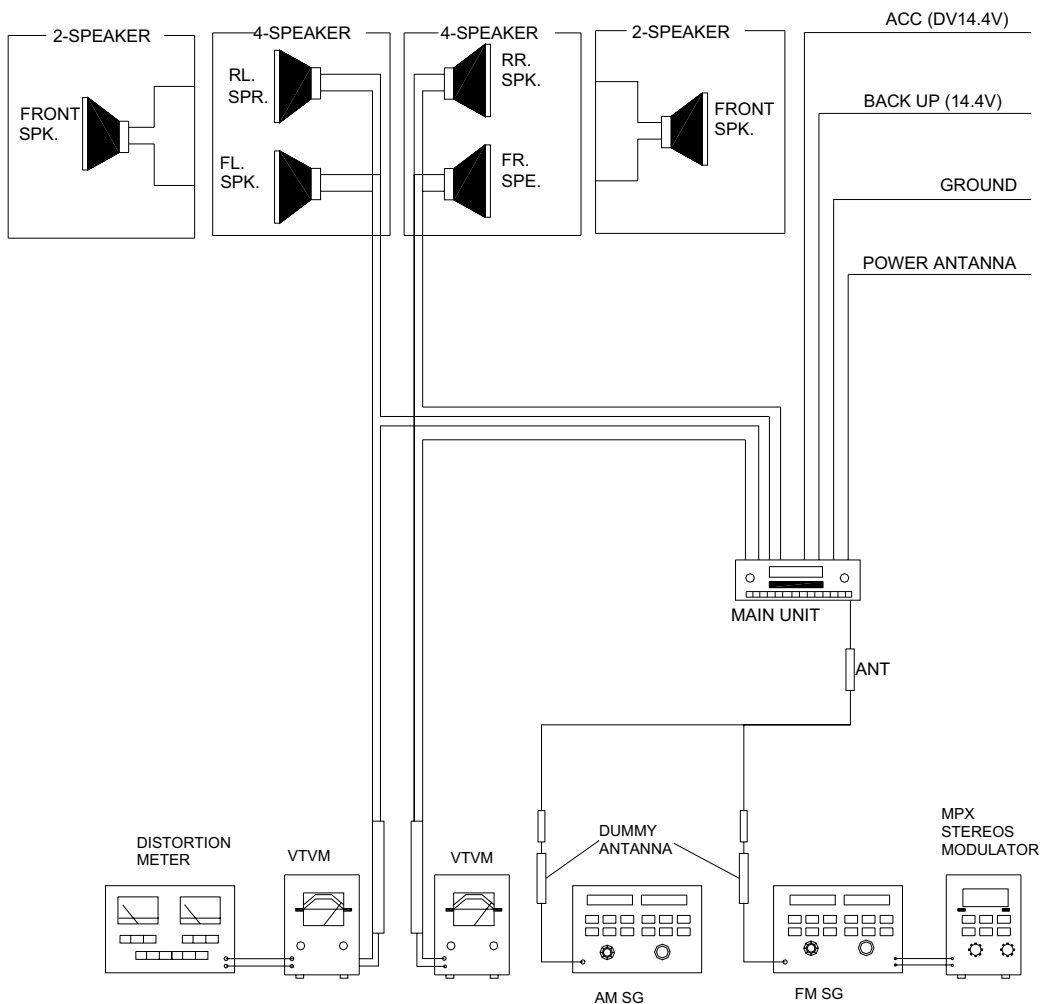
OPERATION CHECK

GENERAL SPECIFICATIONS OF SIGNAL

Standard frequency	FM	98.1 MHz (65.0, 74.0MHz) (87.5, 108.0 MHz)
	MW	1000 kHz (522, 1620 kHz)
Signal output	FM	1mV
	MW	5 mV
Modulation	MW	400 Hz 30% MOD.
	FM Stereo	1 kHz 75kHz DEV.
		46% for L only or R only pilot level 8%
AF output level	FM/MW	
Power source voltage	DC 14.0V (Backup voltage is the same as this)	
AF load impedance	4 ohm pure resistance	
Balance	Center position of level	
Tone	Center position	

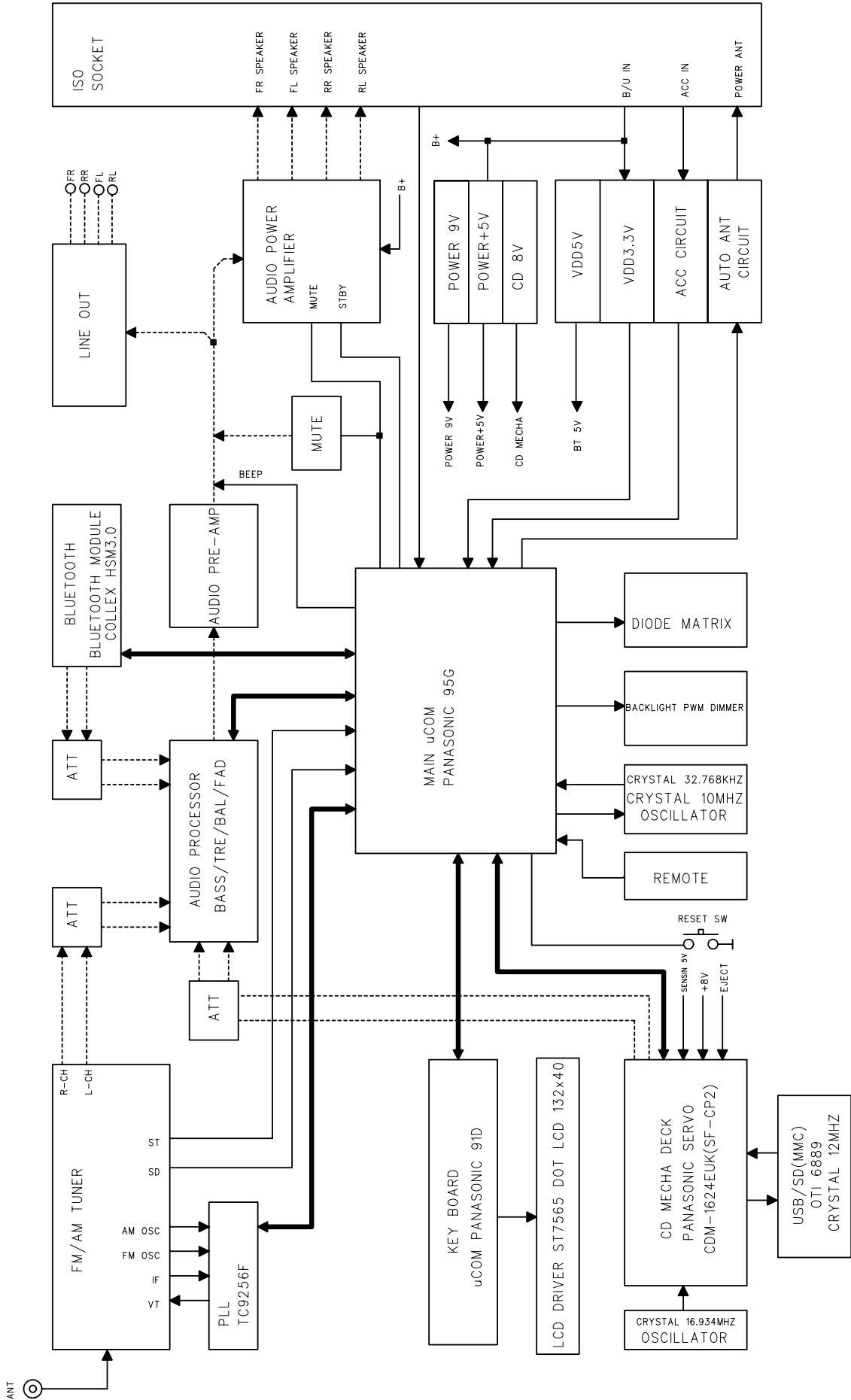
The signal strength read in this section is voltage on the antenna.

Test Diagram



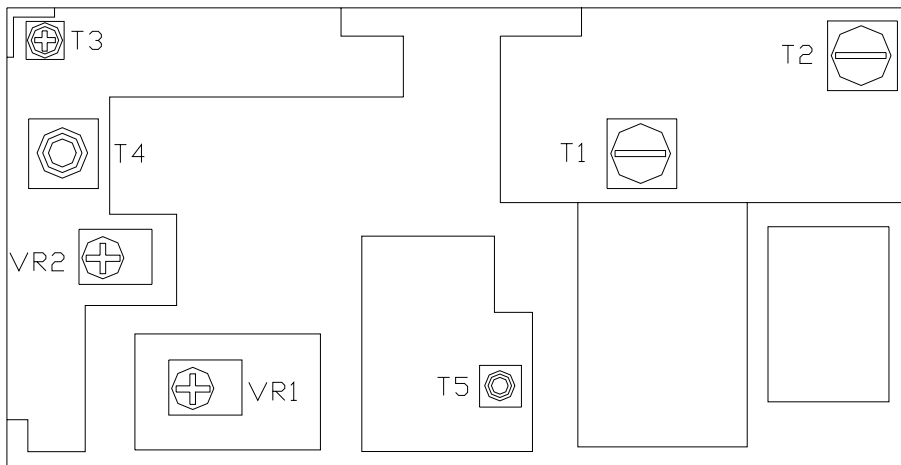
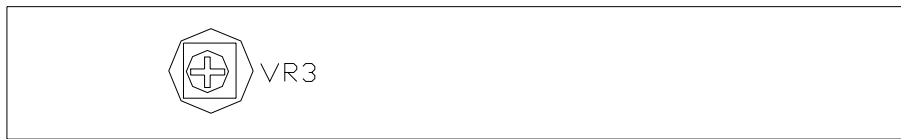
BLOCK DIAGRAM

BT-CDDF5060 BLOCK DIAGRAM



ALIGNMENT LOCATIONS

MITSUMI BOARD



ALIGNMENT PROCEDURES

FM ADJUSTMENT

Equipment Required

AM IF/RF signal generator
Solid-state voltmeter (SSVM)
Regulated DC power supply
2-CH voltmeter
Distortion meter

FM Alignment Using FM Signal Generator

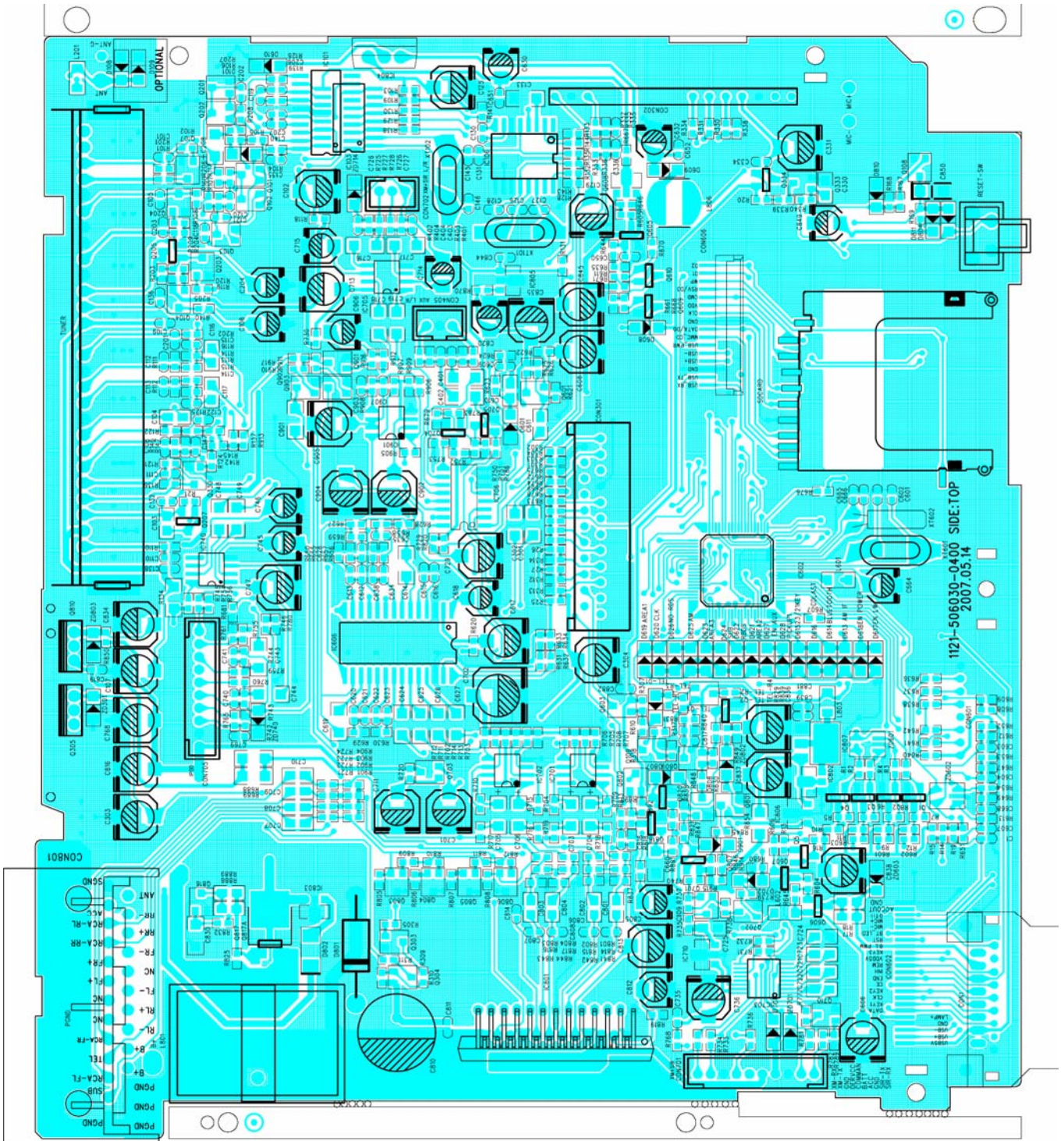
Note: Press the radio power switch to on the radio. Signal generator output must be kept as low as possible to avoid overload and clipping.

Step	Generator Coupling	Generator	Display Setting	Adjustment	Remarks
Stereo Separation	Signal Generator to antenna receptacle	98.1 MHz Int. 1 kHz Dev. 75 kHz L+R = 90 % Pilot = 10 %	98.1 MHz	VR1	Adjust AF output power at maximum separating more than 30 dB
FM SNC Adjustment	98.1 MHz Dev. 75 kHz L+R=90 % Int. 1 kHz 60dB μ V output	98.1 MHz @ 40 dB μ	98.1 MHz	VR2	Stereo Separation 25 dB (\pm 5 dB)
Stop SENS.	Signal Generator to antenna receptacle	98.1 MHz Mod. 1kHz Dev 75kHz	98.1 MHz	VR3	Adjust AF to stop station.

Note: The tuner module is well-adjust and adjustment is not recommended.

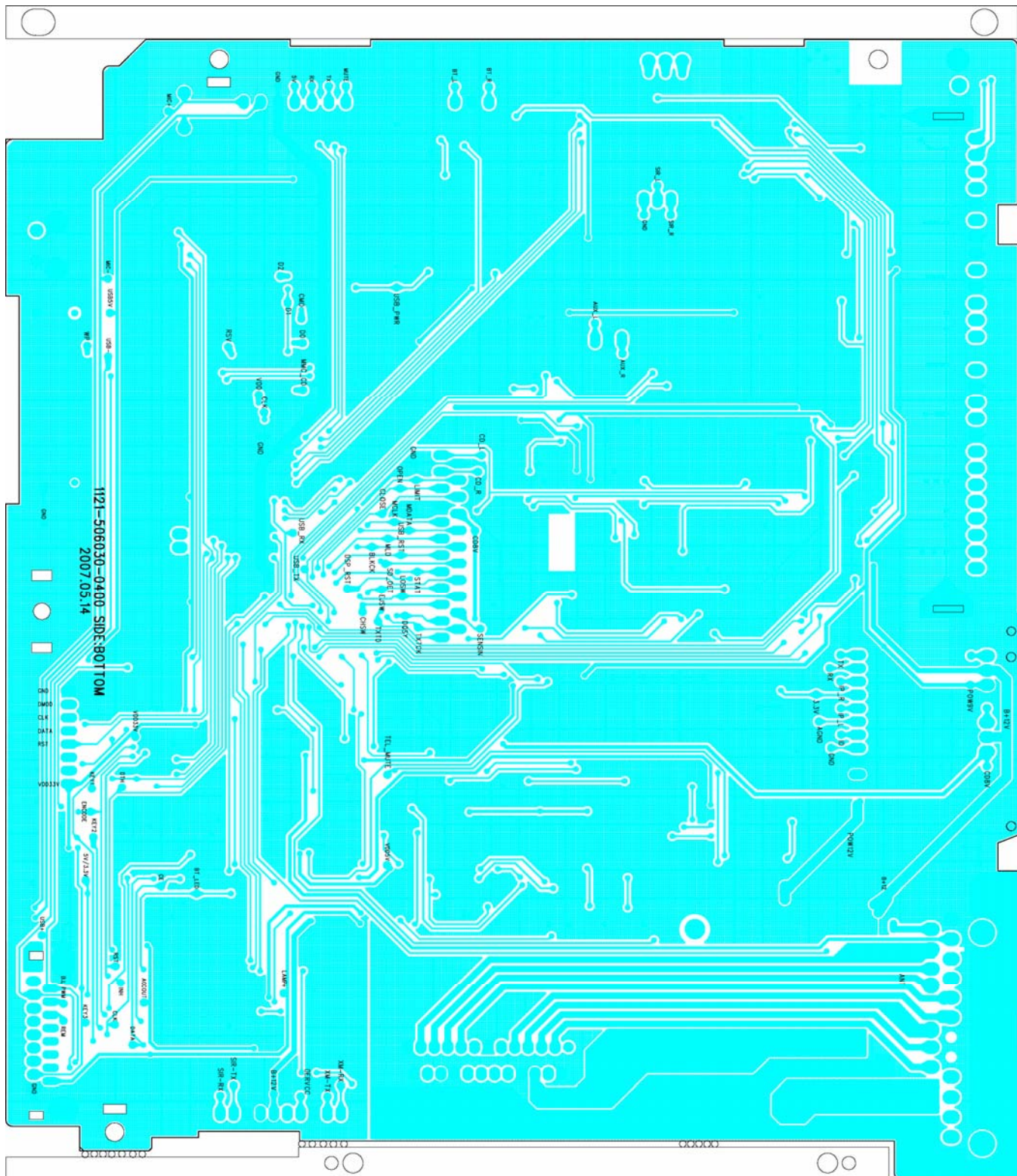
PRINTED CIRCUIT BOARDS

MAIN BOARD



TOP VIEW

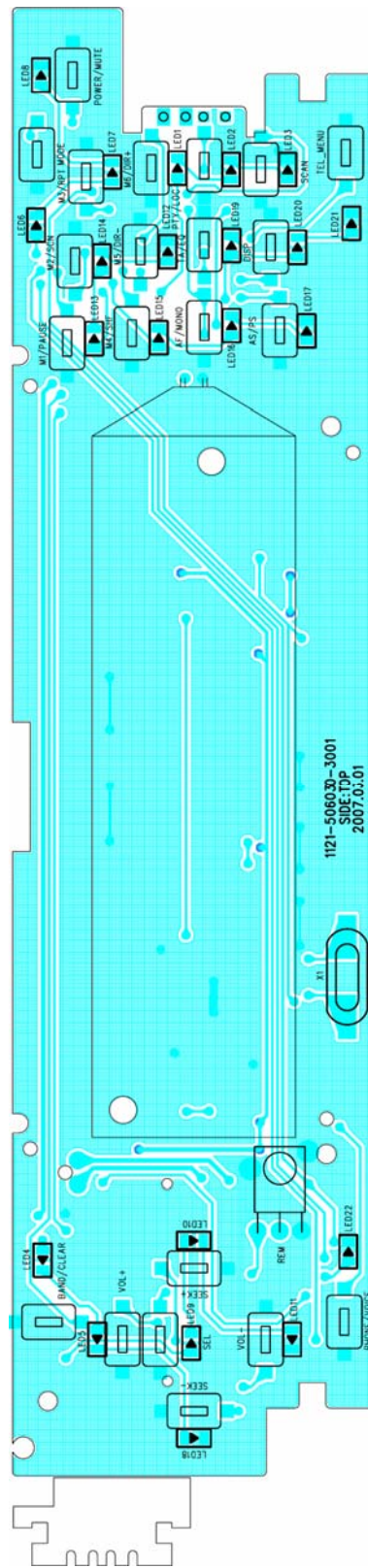
MAIN BOARD



1121-506030-0400 SIDE:BOT TOM
2007.03.14

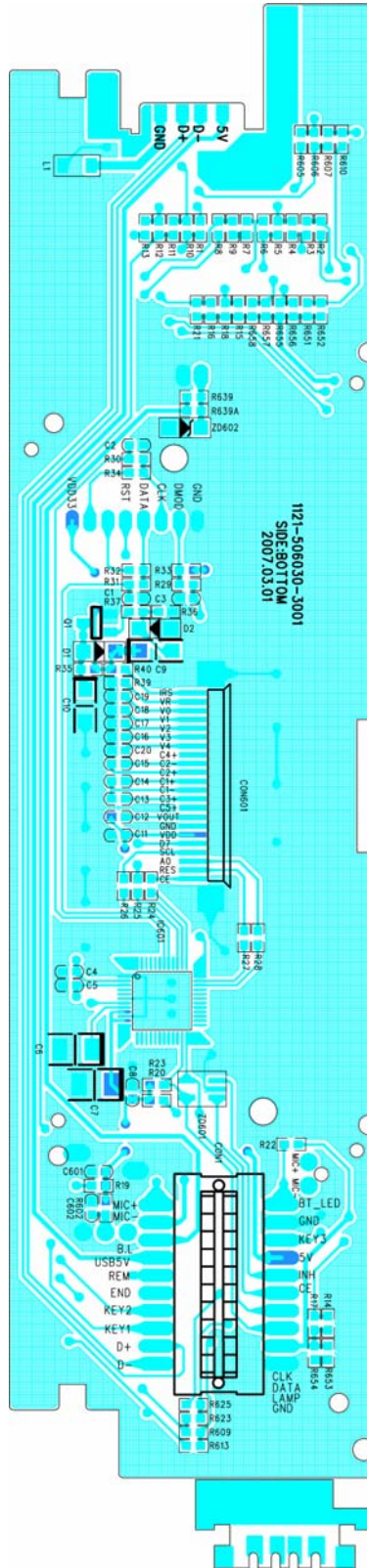
BOTTOM VIEW

KEY BOARD



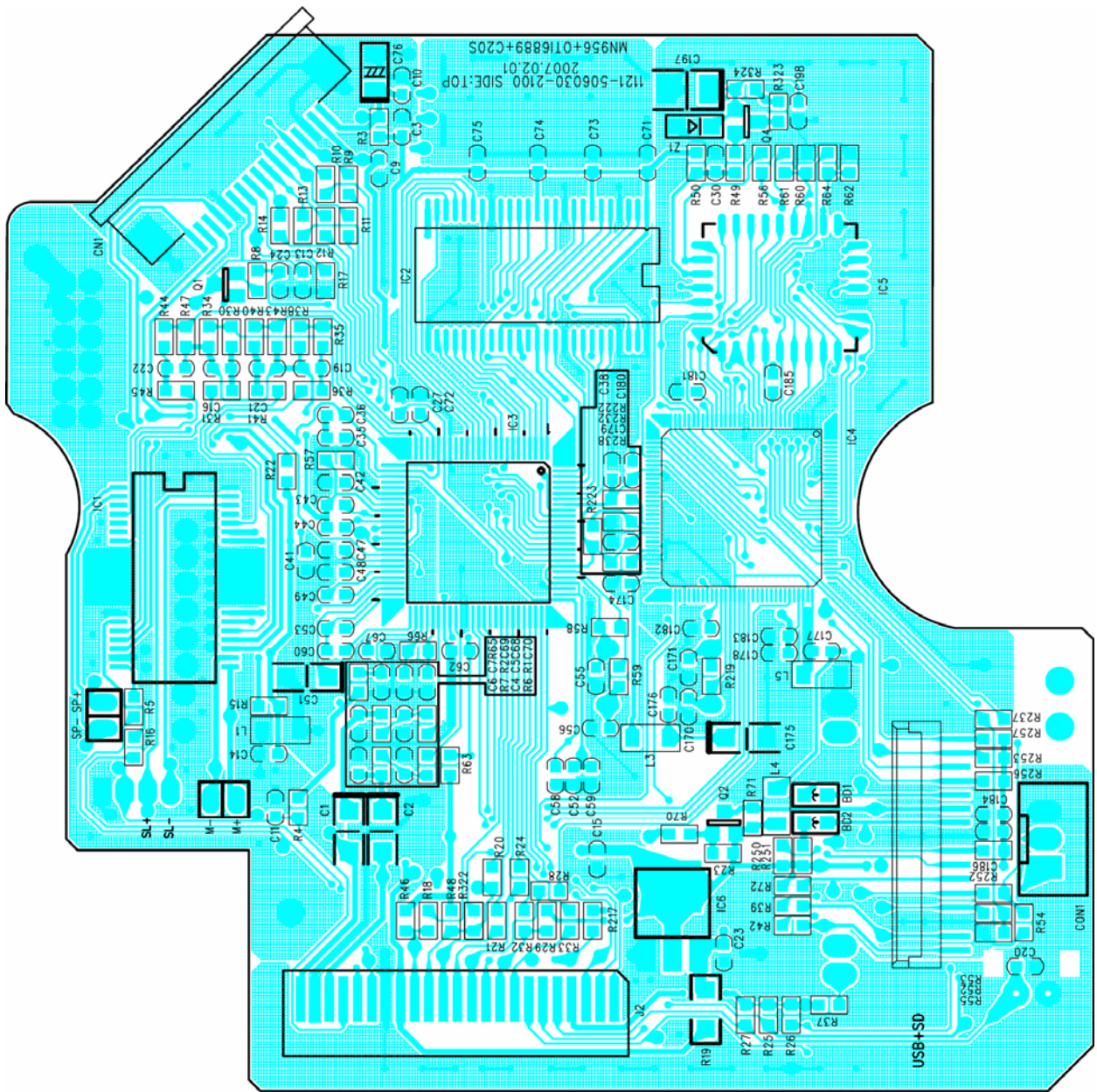
TOP VIEW

KEY BOARD



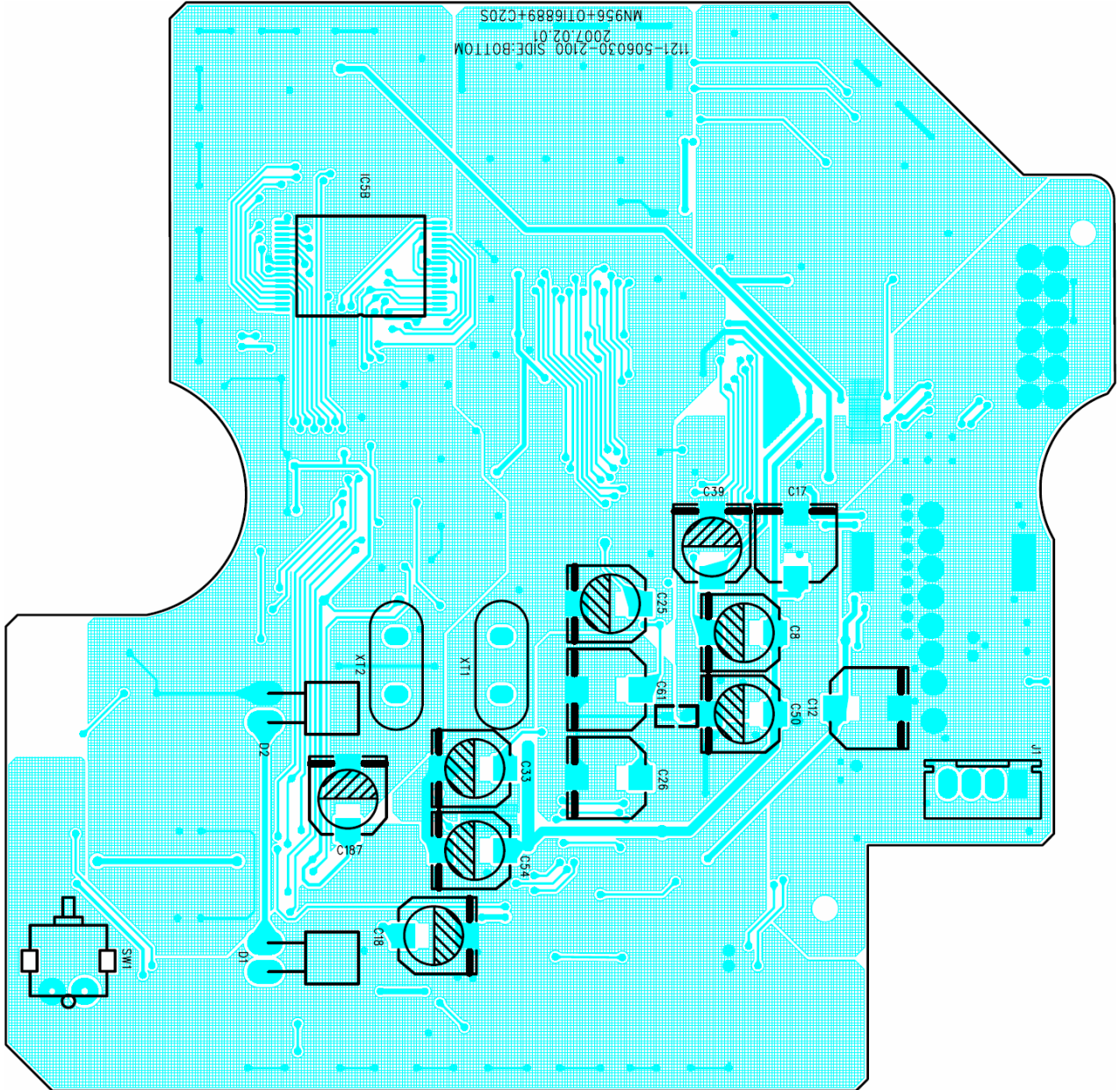
BOTTOM VIEW

CD SERVO BOARD



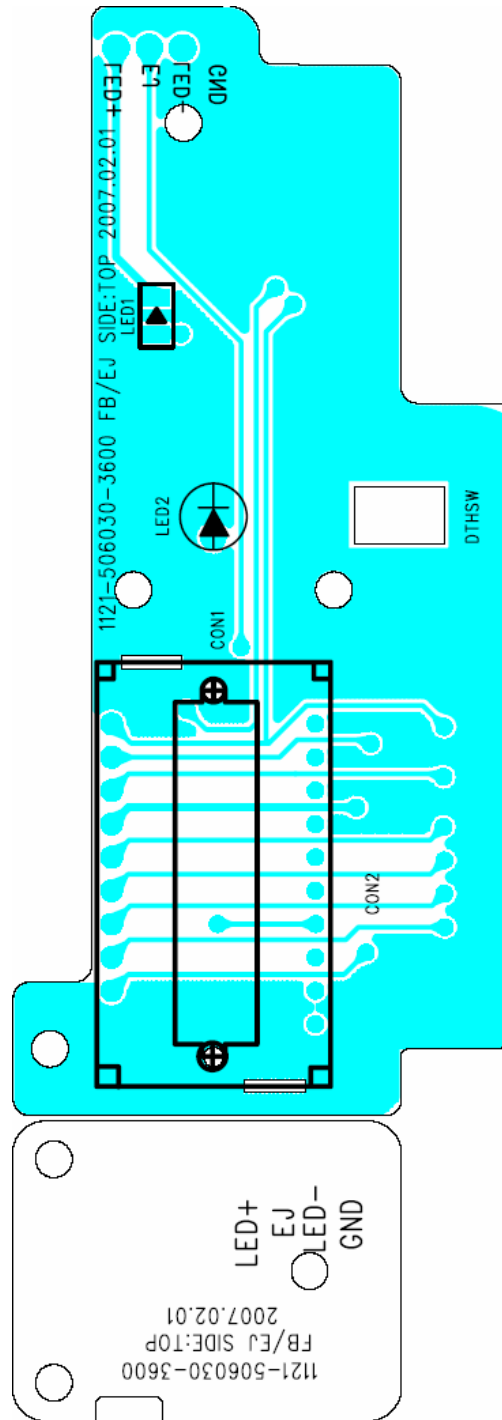
TOP VIEW

CD SERVO BOARD



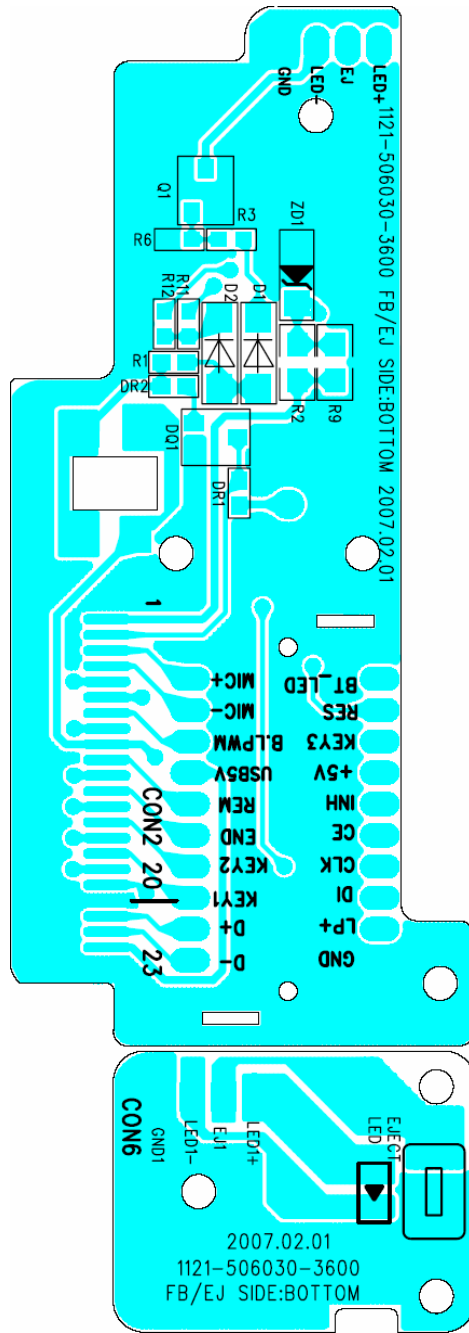
BOTTOM VIEW

FRONT BOARD



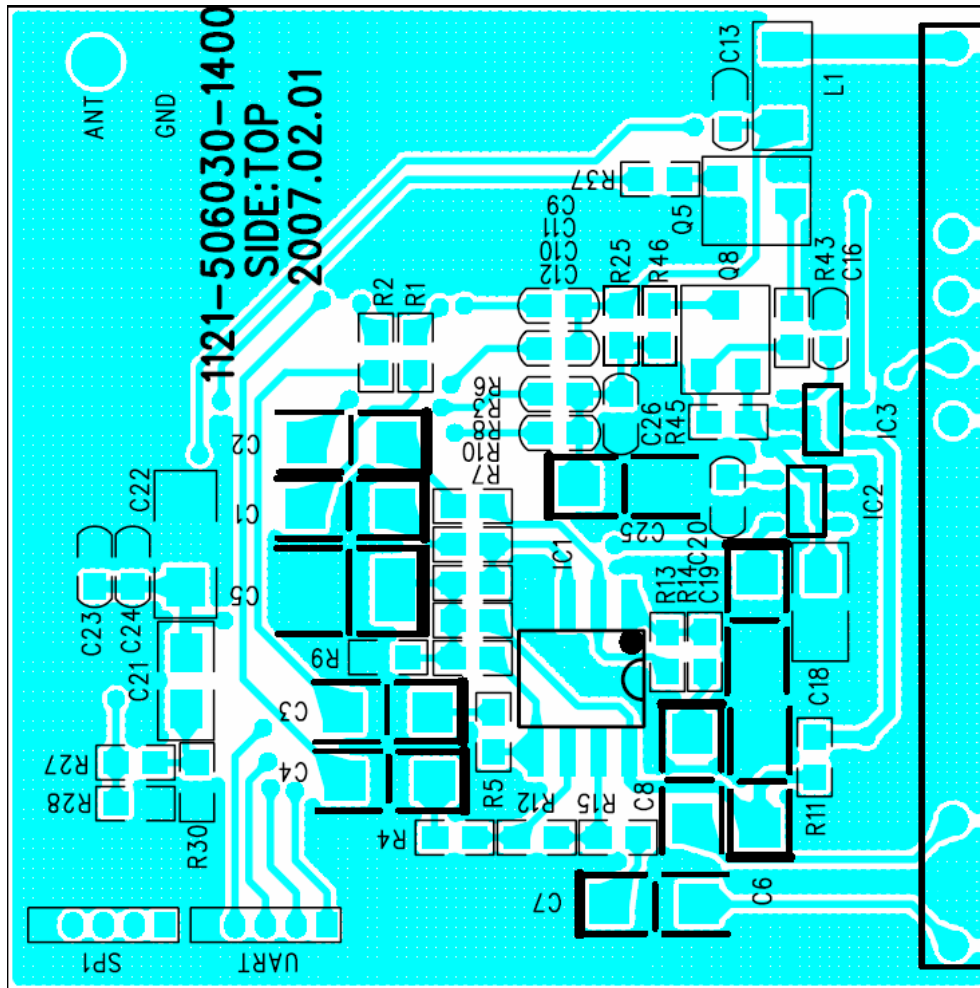
TOP VIEW

FRONT BOARD



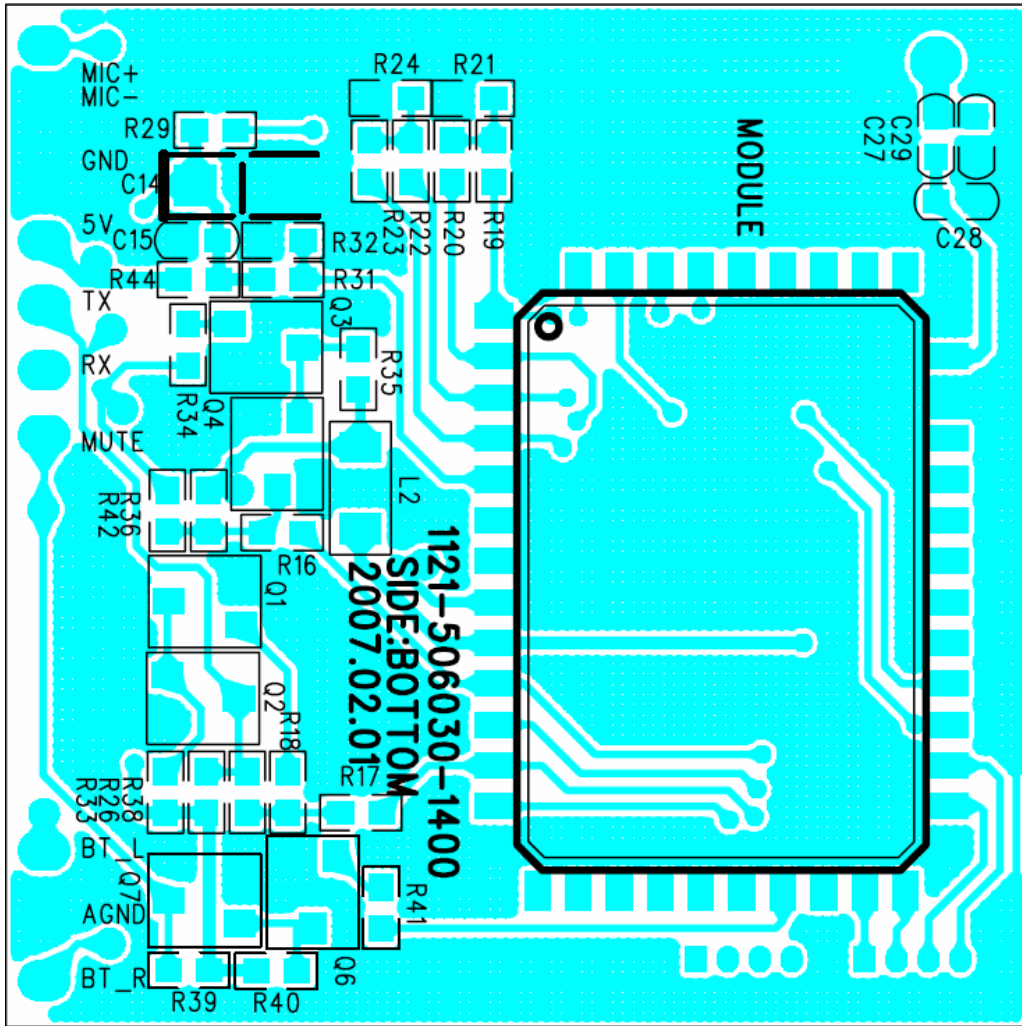
BOTTOM VIEW

BT BOARD



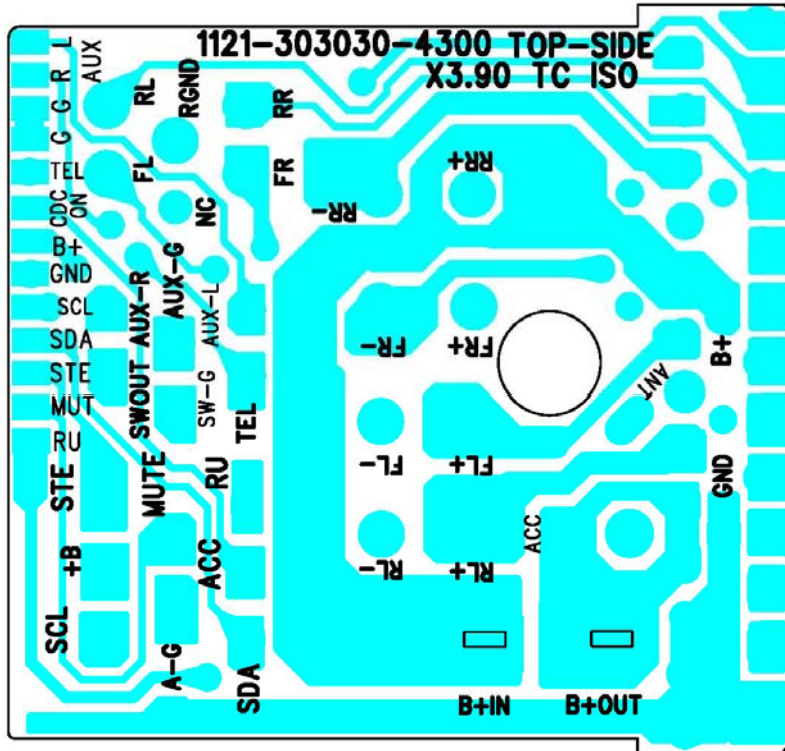
TOP VIEW

BT BOARD



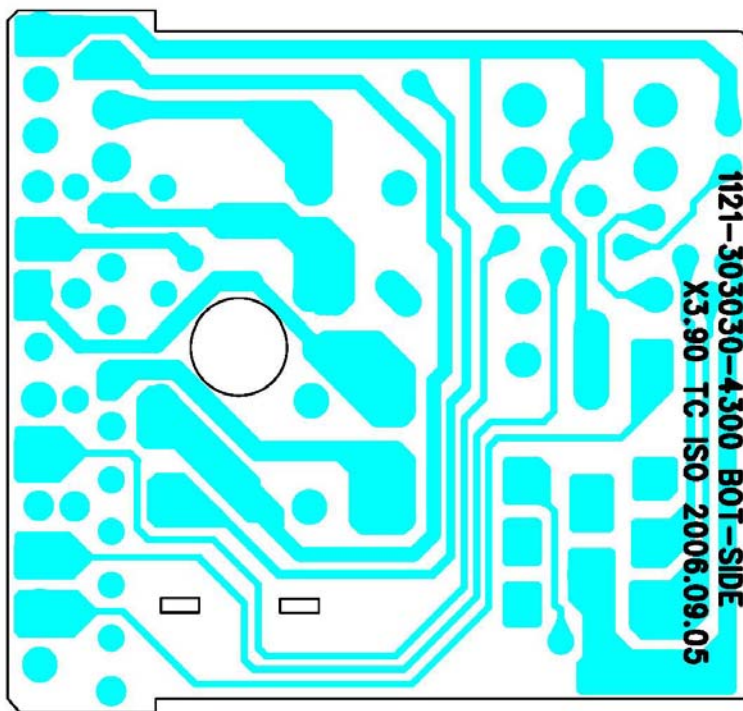
BOTTOM VIEW

TC ISO BOARD



TOP VIEW

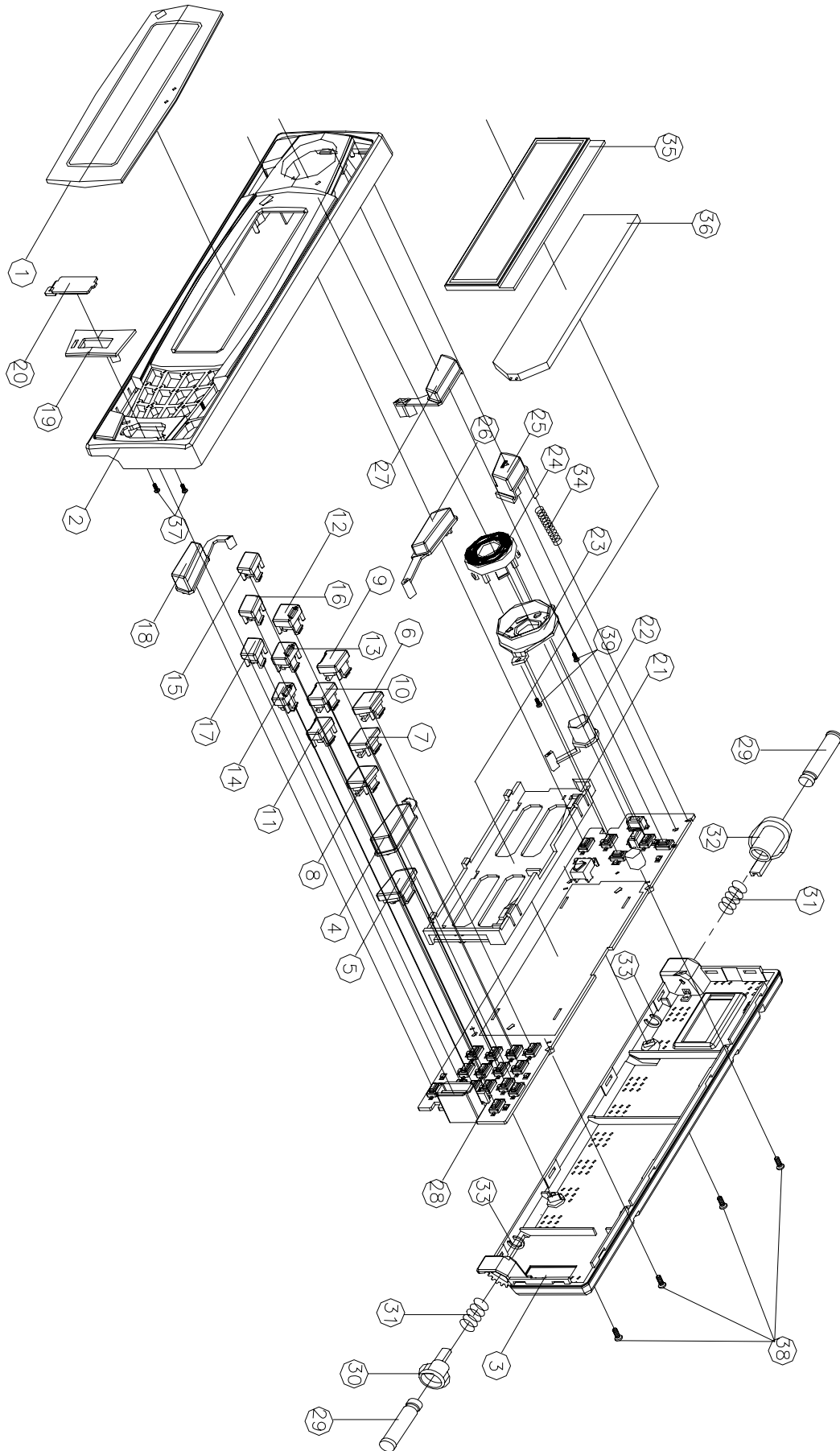
TC ISO BOARD



BOTTOM VIEW

EXPLODED VIEW

PANEL



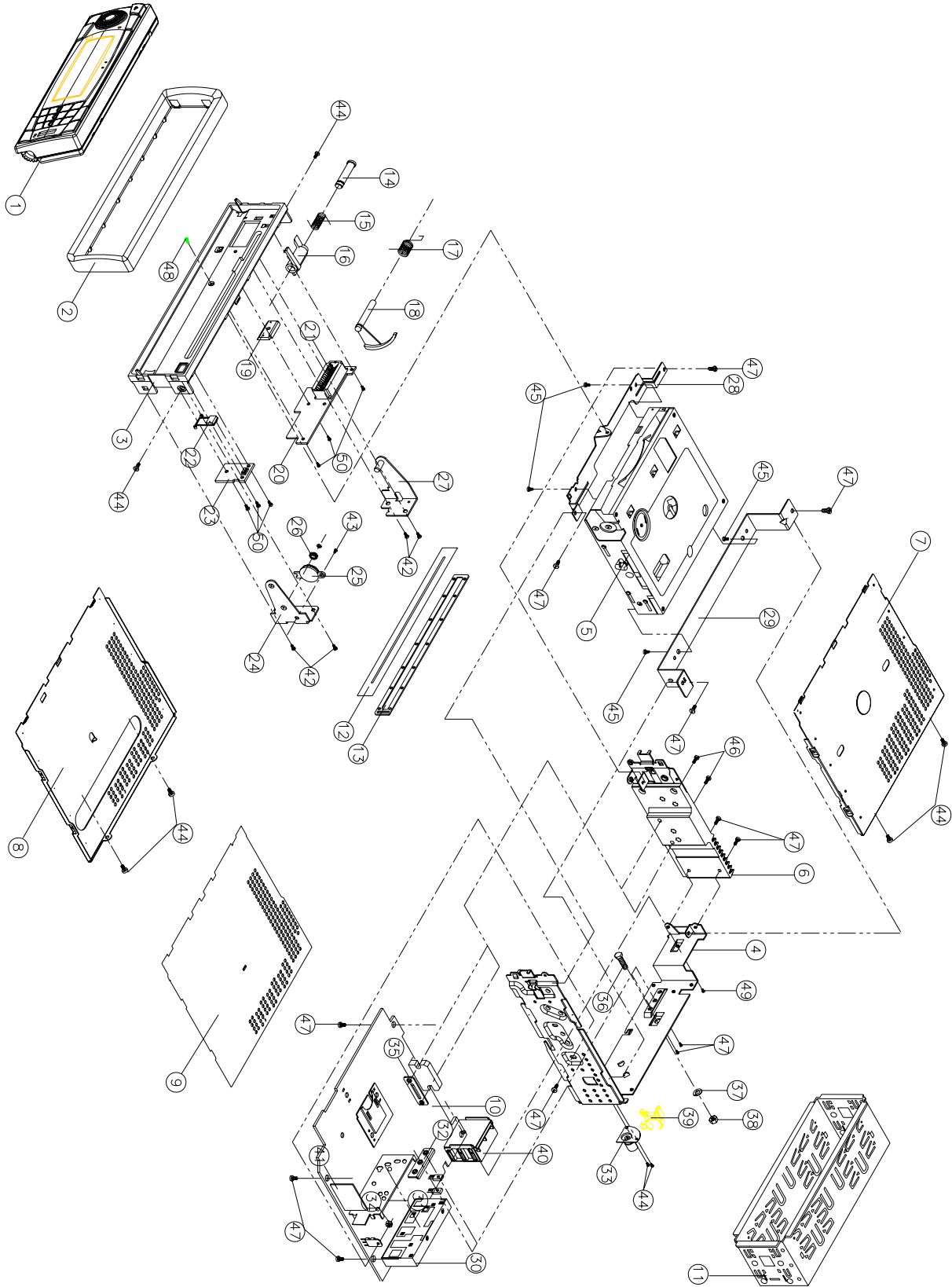
EXPLODED VIEW PARTS LIST

PANEL

Ref. No.	Description	RS Part No.	Mfr's Part No.
1	LENS(S.N0000/PMS422C)XN5.16W/RDS N/IR ROHS		5300-506020-33Y
2	TOP PANEL(S.N0000+N1204/PMS422C+PMS426C)ROHS		5100-506020-31Y
3	BOTTOM FOR BT5060 ROHS		5100-506021-000
4	MODE/PAIR KB(S.N1204)ROHS		5200-506026-810
5	POWER/MUTE KB (S.N1204)ROHS		5200-506027-810
6	1 PAU KB(S.N0000)ROHS		5200-506028-310
7	2SCN KB(S.N0000)ROHS		5200-506029-310
8	3RPT KB(S.N0000)ROHS		5200-506030-310
9	4SHF KB(S.N0000)ROHS		5200-506031-310
10	5DIR-KB(S.N0000)ROHS		5200-506032-310
11	6DIR+KB(S.N0000)ROHS		5200-506033-310
12	7AF KB (S.N0000)ROHS		5200-506034-310
13	8TA/EQ KB(S.N0000)ROHS		5200-506035-310
14	9PTY KB (S.N0000)ROHS		5200-506036-310
15	*/AS/PS KB (S.N0000)ROHS		5200-506037-310
16	0 DSP/CON KB (S.N0000)ROHS		5200-506038-310
17	#/SCAN KB (S.N0000)ROHS		5200-506039-310
18	T-MENU KB(S.N1204)ROHS		5200-506040-810
19	COVER W/USB (S.N0000)ROHS		5200-506042-300
20	USB COVER (GREY) ROHS		8100-0M2120-00
21	LCD BRACKET FOR BT5060 ROHS		5200-506043-000
22	SEL/MENU KB(S.N0000)ROHS		5200-506022-310
23	VOL BACKLIGHT ROHS		5200-506020-00W
24	DIRECTION KB(E-BLACK)ROHS		5200-506021-90B
25	OPEN KB(S.N1204)ROHS		5200-506023-800
26	PHONE OFF/BND KB (S.N1204) ROHS		5200-506024-810
27	PHONE ON KB (S.N1204)ROHS		5200-506025-810
28	KEY BOARD		1121-506030-3001
29	AXIS POST § 2.0X60 ROHS		3400-024601-00
30	RIGHT SIDE BLOCK ROHS		5200-0E2128-00
31	CONTACT SPRING ROHS		3600-078008-00
32	LEFT SIDE BLOCK ROHS		5200-0E2129-00
33	E-RING § 1.5X0.4X0.4MM HARDEN ROHS		3500-000001-01
34	RE KNOB SPRING ROHS		3600-011852-00
35	LCM FSTN POS COG132040A00-FKN-R 80X29X2.8MM BT- CD5060 ROHS		2700-506030-020L
36	LED BACKLIGHT WHITE 85.5X23MM YUHUA ROHS		0200-506009-00
37	SCREW § 1.7X4 PH/ST ROHS		4000-011704-00
38	SCREW § 2X8 BH/ST BALCK ROHS		4000-012008-01
39	SCREW § 2X4BH/ST BALCK ROHS		4000-012004-21

EXPLODED VIEW

CABINET



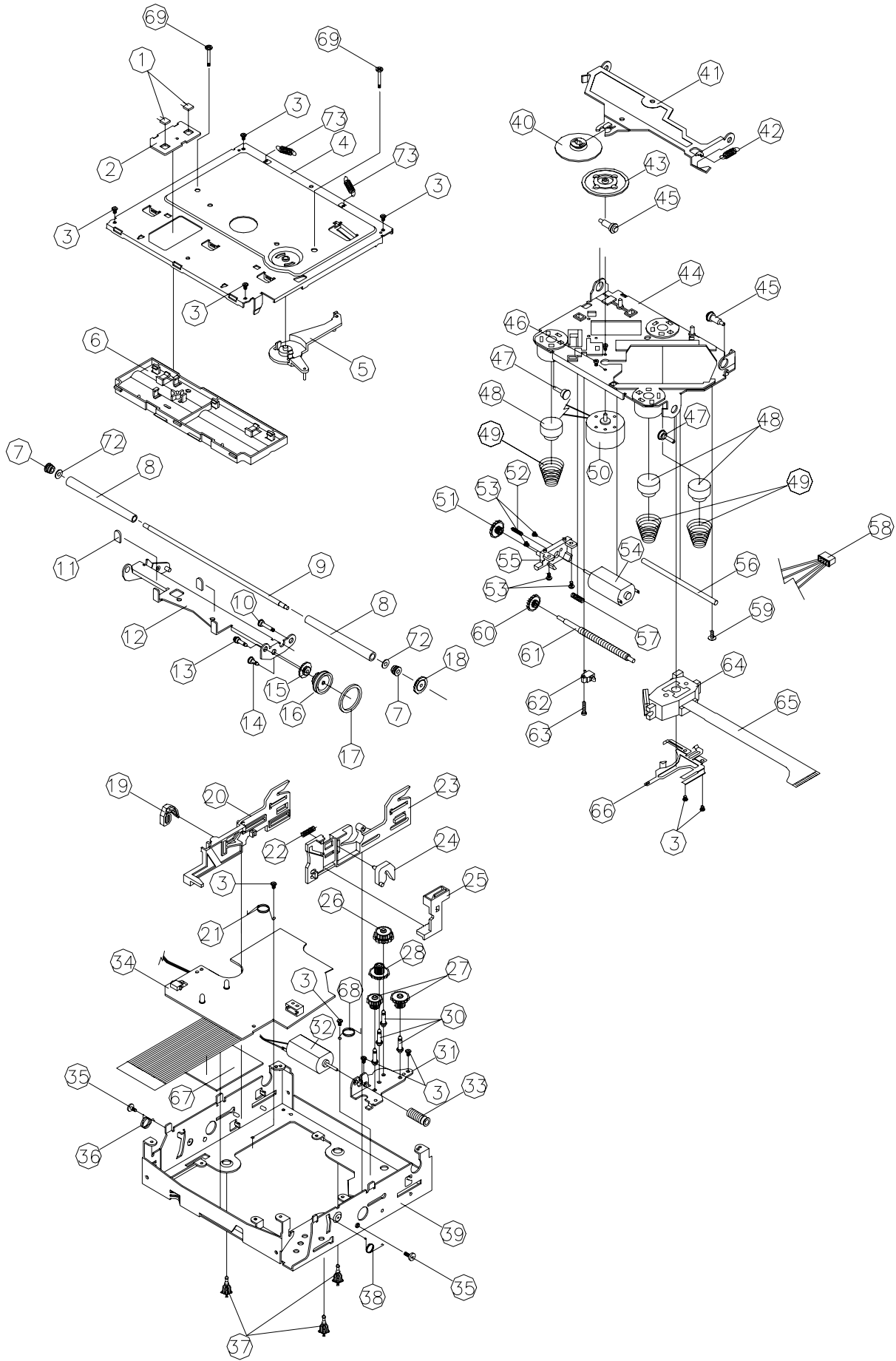
EXPLODED VIEW PARTS LIST

CABINET

Ref. No	Description	RS Part No.	Mfr's Part No.
1	Panel		
2	Ring (S.N02001) ROHS		5100-0G2121-30G
3	Base (F) (MMS+SD) ROHS		5100-0E2126-00
4	Rear-right Cabinet W/Spring For CD-ISO ROHS		6100-300006-002
5	Deck CDM-1624EUK(SF-CP2)CHUDONG (R01-3A) ROHS		9400-001684-13C
6	Left Cabinet-heat Sink W/Spring ROHS		6100-300004-003
7	Top Cabinet ROHS		6100-300001-000
8	Bottom Cabinet ROHS		6100-300002-000
9	Main Fiber ROHS		3500-300001-000
10	Main Board		1121-506030-0400
11	Mounting Box ROHS		6100-300005-000
12	Shade ROHS		8100-069005-03
13	CD Windows Sheet ROHS		4300-0A3103-00
14	Hook Shaft ROHS		3400-0D2101-00
15	Hook Spring ROHS		3600-0E2101-00
16	Hook ROHS		5200-0E2127-00
17	Push Out Spring ROHS		3600-0E2102-00
18	Panel Pole ROHS		5200-0E2126-00
19	B-Light (F) (White) ROHS		5200-506045-00W
20	Front Board		1121-506030-3600
21	Connector Female 20PIN P=2.0MM V-Type East SUN ROHS		2500-0F0217-20A
22	Eject Key (S. N0000) (L-Up) ROHS		5200-506044-010
23	Eject Board		1121-506030-3600
24	Right Bracket ROHS		3900-0E2101-01
25	Damper Gear Assy /19-24 T/Q ROHS		9300-012246-01S
26	Middle Gear (F) ROHS		5200-0E2130-00
27	Left Bracket ROHS		3900-0E2102-01
28	Deck Front Bracket ROHS		3910-300001-000
29	Deck Rear Bracket For CD ROHS		3900-300002-000
30	M.FAE347/P21/P22 East Furepe 1 Pack 65-108MHJ ROHS		2901-000347-03
31	Shield Cover (Mitsumi Tuner)(0.045KG) ROHS		3900-0W2001-00
32	IC Bracket For Regulntor ROHS		3900-300007-000
33	ISO Antenna Socket/Short W/Holder ROHS		3900-024613-00
34	Hexagon Nut M2.6 ROHS		3500-040026-00
35	Power IC BKT ROHS		3900-300006-000
36	Screw Ø5X18 HH ROHS		4000-005018-04
37	Spring Washer M5 ROHS		3500-050001-00
38	Hexagon Nut M5 ROHS		3500-040005-00
39	Antenna Bracket ROHS		5200-024625-00

Ref. No	Description	RS Part No.	Mfr's Part No.
40	Connector ISO Female 36Pin P=1.5MM ROHS		2500-012245-36
41	BT Board		1121-506030-1400
42	Screw Ø2X6 PA/ST (Black) ROHS		4000-012006-20
43	Camera Screw M2X3 P/H (Black) ROHS		4000-012003-09H
44	Screw Ø2.6X4 BH/MS ROHS		4000-002604-01
45	Screw Ø2.6X5 BH/TAPTITE ROHS		4000-002605-03
46	Screw M2.6X20 PH/MS ROHS		4000-002606-00
47	Screw Ø2.6X6 BH/MS ROHS		4000-002606-01
48	Screw Ø2.6X6 PH/MS BLACK ROHS		4000-002606-20
49	Screw Ø2.6X8 BH/MS ROHS		4000-002608-01
50	Screw Ø2X4 BH/ST Black ROHS		4000-012004-21

EXPLODED VIEW (DECK)



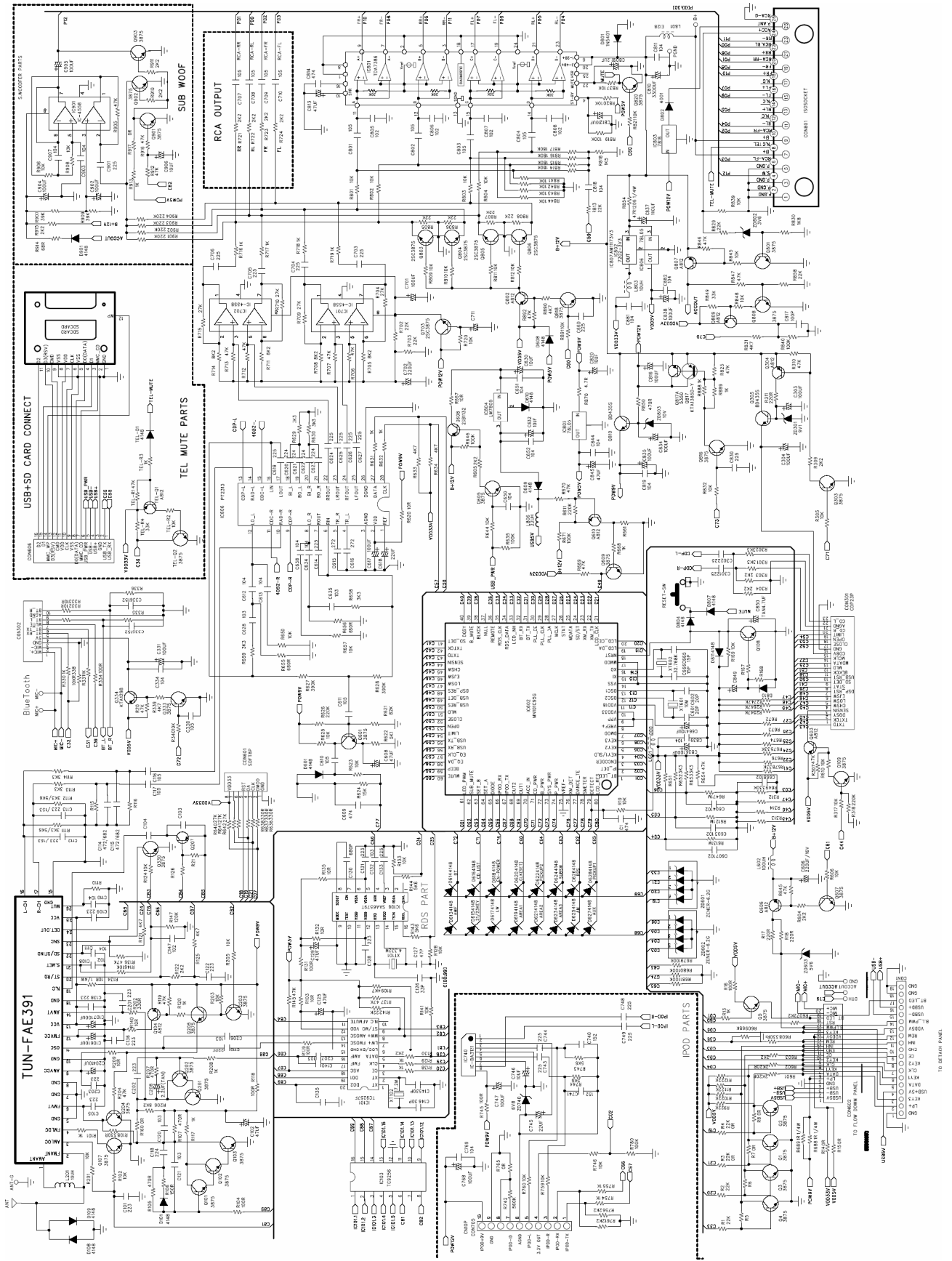
EXPLODED VIEW PARTS LIST (DECK)

Ref. No.	Description	Parts No.	Q'ty
1	SENSOR	ST-23G	2
2	SENSOR PCB	FR	1
3	SCREW	CA/H 0" TT 2*3	12
4	COVER-UPPER	SECC T1.0	1
5	LEVER DISC	POM (F20-03)	1
6	GUIDE UP	POM (F20-03)	1
7	BUSHING ROLLER	POM (F20-03)	2
8	ROLLER DISC	SLICON	2
9	SHAFT ROLLER	SUS 303	1
10	PIN ROLLER	SUM24L-NI (PLATE)	1
11	PVC CAP	PVC	2
12	B/K ROLLER	SECC T1.0	1
13	PIN PULLEY	SUM24L-NI (PLATE)	1
14	PIN IDLE	SUM24L-NI (PLATE)	1
15	GEAR IDLE	POM (F20-03)	1
16	GEAR PULLEY	POM (F20-03)	1
17	BELT PULLEY	CR-WRT	1
18	GEAR ROLLEY	POM (F20-03)	1
19	LOCKER (L)	POM (F20-03)	1
20	CAM (L)	POM (F20-03)	1
21	S/P CAM (L)	SUS304WPB	1
22	S/P RACK	SUS304WPB	1
23	CAM (R)	POM (F20-03)	1
24	LOCKER ®	POM (F20-03)	1
25	GEAR RACK	POM (F20-03)	1
26	GEAR LOAD ©	POM (F20-03)	1
27	GEAR LOAD (D)	POM (F20-03)	1
28	GEAR LOAD (B)	POM (F20-03)	1
29	GEAR LOAD (A)	POM (F20-03)	1
30	PIN LOAD	SUM24L-NI (PLATE)	4
31	B/K GEAR	SECC T1.0	1
32	MOTOR	FF-050SH-11190	1
33	GEAR WORM	POM (F20-03)	1
34	SERVO PCB ASSY	GLASS EPOXY 1.2T	1
35	SPECIAL SCREW	P/H TTS 2*2	4
36	S/P RO (L)	SUS304WPB	1
37	SUPPORT DAMPER	POM (F20-03)	3
38	S/P RO ®	SUS304WPB	1
39	CHASSIS MAIN	SEEC T1.0	1

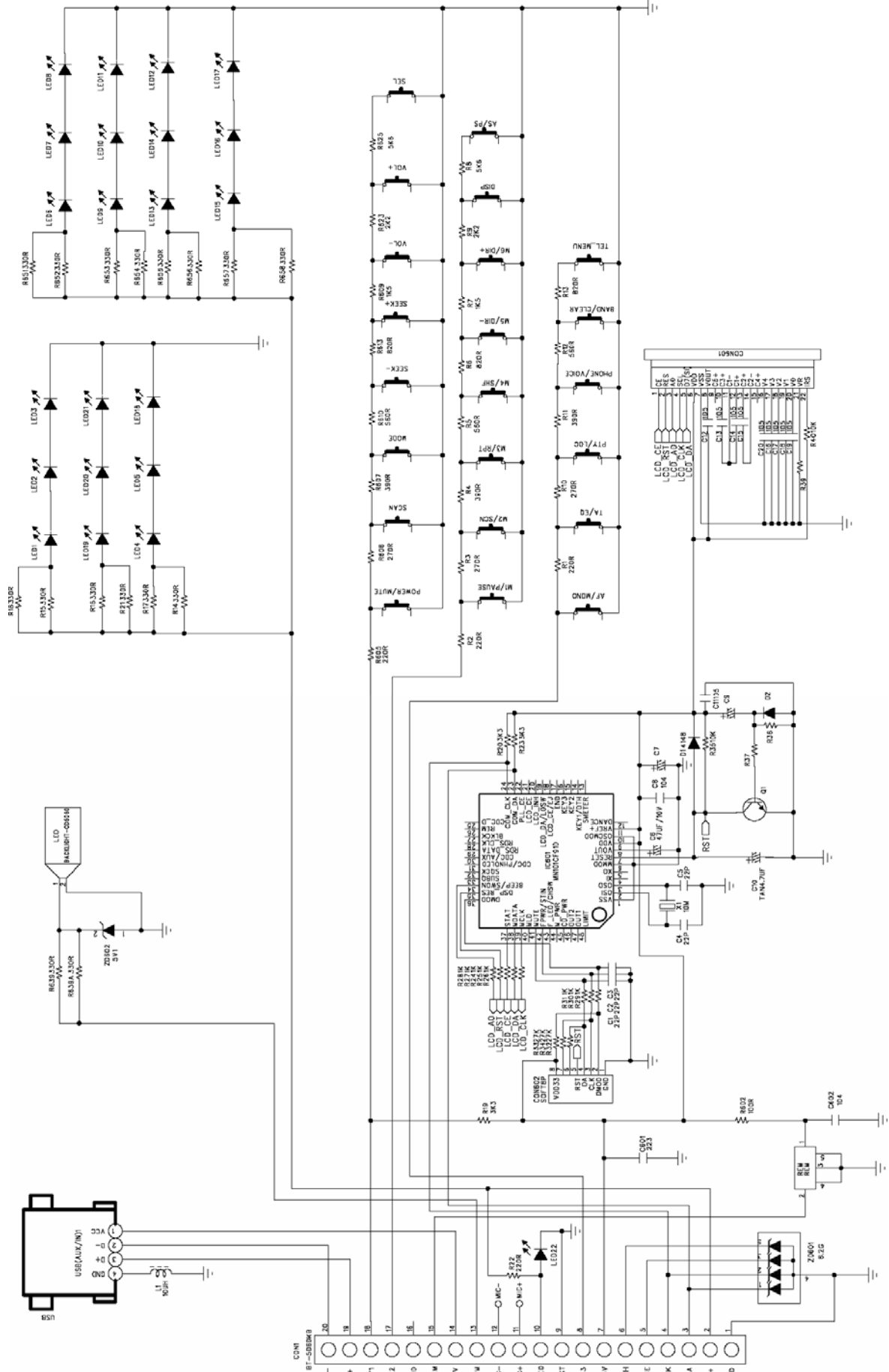
EXPLODED VIEW PARTS LIST - CONTINUED (DECK)

Ref. No.	Description	Parts No.	Q'ty
40	CLAMP DISC	POM (F20-03)	1
41	HOLD CLAMPER	SECC T1.0	1
42	S/P CLAMPER	SUS304WPB	1
43	TURN TABLE	ABS G/F 20%	1
44	BASE PU	POM (F20-03)	1
45	PIN SIDE (A)	SUM24L-NI (PLATE)	2
46	SCREW	CA/H 0" M/S 1.7*2.5	2
47	PIN SIDE (B)	SUM24L-NI (PLATE)	2
48	DAMPER	BUTHYL	1
49	S/P BASE	SUS304WPB	2
50	MOTOR	RF-400CA-12265	1
51	GEAR PU (B)	HYTRELL 5526	1
52	GEAR PU (A)	POM (F20-03)	1
53	SCREW	CA/H 0" M/S 2*2	6
54	MOTOR	FF-050SH-11190	1
55	HOUSING GEAR	POM (F20-03)	1
56	SHAFT PU	KNN11 (PCD18)	1
57	SCREW	R/H (W/W) TTB2*5	1
58	4P CONT WIRE	1007 #28	1
59	SPRING TENSION	SUS304WPB	1
60	GEAR PU ©	POM (F20-03)	1
61	LEAD SCREW	BSBM	1
62	SWITCH	SW-110	1
63	SCREW	B/H TTB1.7*8	1
64	PICK UP	MG205	1
65	FPC WIRE	POLY AMIDE	1
66	SPRING PU	SUS T0.2	1
67	FIBER PAPER		1
68	S/P CAM ®	0.55	1
69	TRANSIT SCREW	4.5*18	2
70	INSULATOR COVER	PE	1
71	SWITCH	SW-111	1
72	WASHER PE	PE	2
73	S/P BASE ®	SUS304WPB	2

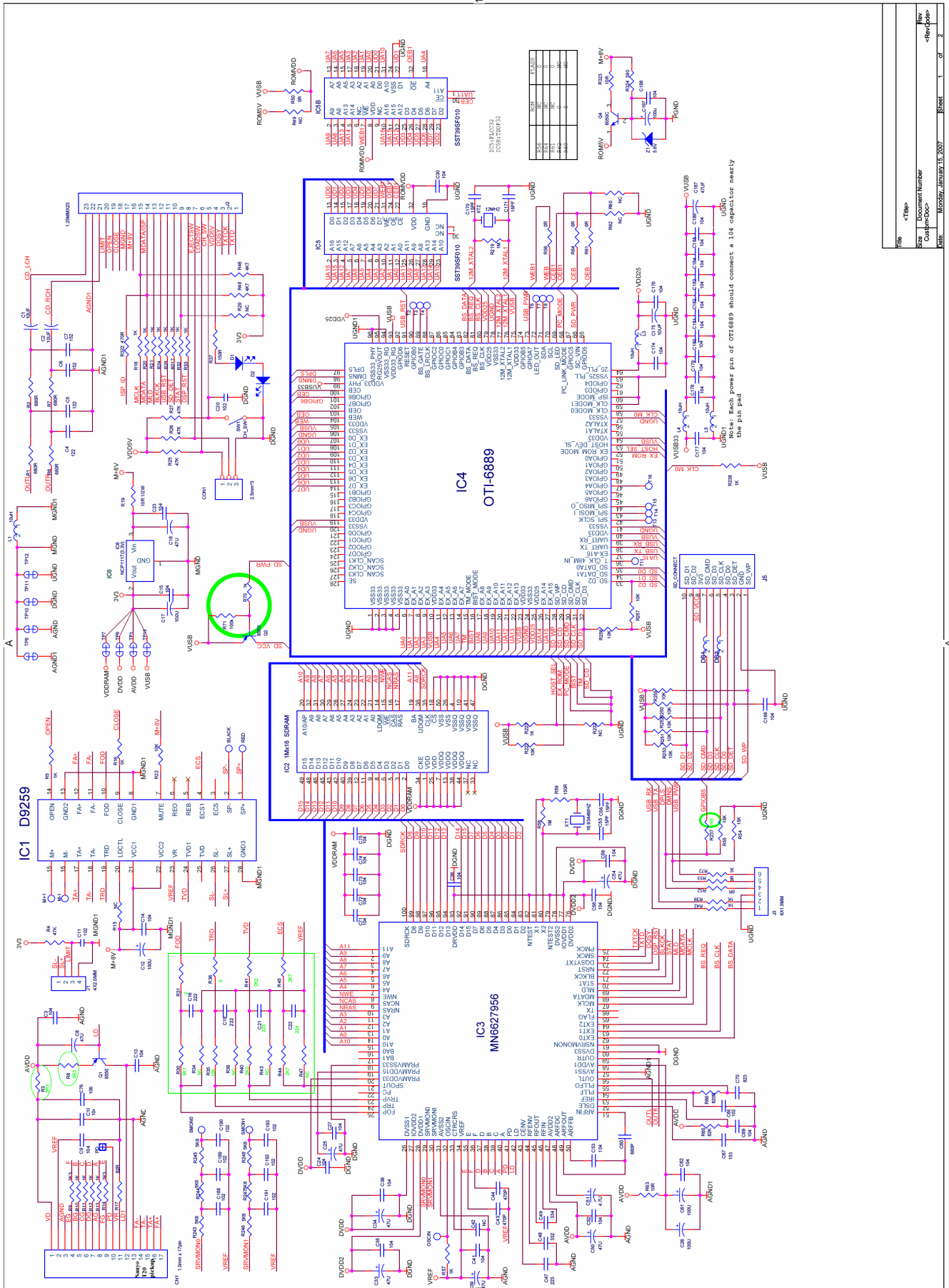
SCHEMATIC DIAGRAM (MAIN BOARD)



SCHEMATIC DIAGRAM (KEY BOARD)



SCHEMATIC DIAGRAM (CD SERVO BOARD)



ELECTRICAL PARTS LIST

Ref. No.	Part No.	Description	Q'ty
PC BOARD ASSY, MAIN BOARD			
Q610	0100-000812-00	TR PNP 2SA812 SOT-23 KEC ROHS	1
Q608	0100-001132-00	TR PNP 2SB1132Q SOT-89 ROHM ROHS	1
Q605,609	0100-003875-07	TR NPN 2SC3875G SOT-23 NEC ROHS	2
D609,610	0200-004148-02	DIODE SMD RLS4148 LL-34 ROHM ROHS	2
C650~652	0500-063104-01	CER.CAP SMD 0.1uF 50V ±10% X7R 0603 ROHS	3
C630,632	0600-016106-54	E.CAP SMD 10uF ±10% 16V ⌀ 4×5.5MM ROHS	2
R667	0700-063100-00	RES SMD 10Ω ±5% 1/10W 0603 ROHS	1
R668	0700-063102-00	RES SMD 1KΩ ±5% 1/10W 0603 ROHS	1
R644	0700-063103-00	RES SMD 10KΩ ±5% 1/10W 0603 ROHS	1
R635,646,671	0700-063104-00	RES SMD 100KΩ ±5% 1/10W 0603 ROHS	3
R605	0700-063222-00	RES SMD 2.2KΩ ±5% 1/10W 0603 ROHS	1
R611	0700-063224-00	RES SMD 220KΩ ±5% 1/10W 0603 ROHS	1
R669,670	0700-063473-00	RES SMD 47KΩ ±5% 1/10W 0603 ROHS	2
L806	0900-000220-54B	INDUCTOR 22uH CD75 ⌀ 7X5MM SMT ROHS	1
CON606	2500-016125-01	SOCKET SMD 16PIN P=1.25 1.25T-2-16PWB JINSHZ ROHS	1
SD CARD	2500-020080-12	SOCKET SD CARD CONNECTOR PUSH TYPE ROHS	1
IC804	0300-007805-11S	REGULATOR UTC7805 (TO-220) SILAN ROHS	1
SB TO MB	3200-506016-00	CABLE BT-CD5060 16PIN SOCKET+WIRE P=1.25MM ROHS	1
ZD601,602	0200-000062-07	E.S.D.DIODE SMD NNCD6.2G SOT23-5L ROHS	2
D615,627,108,109,619,621	0200-004148-02	DIODE SMD RLS4148 LL-34 ROHM ROHS	6
IC602	0300-000095-10	IC MN101CT95G ORIT RUSSIAINT FONTS TQFP080-P-1212D DOT LCD PANASON2C ROHS	1
C112,113	0500-063153-01	CER.CAP SMD 0.015uF 50V ±10 X7R 0603 ROHS	2
C114/5	0500-063472-01	CER.CAP SMD 4700PF 50V ±10% X7R 0603 ROHS	2
R3,4,7,8,14,601,602,160	0700-063000-00	RES SMD 0Ω ±5% 1/10W 0603 ROHS ROHS	8
R19	0700-063103-00	RES SMD 10KΩ ±5% 1/10W 0603 ROHS	1
R608	0700-063331-00	RES SMD 330Ω ±5% 1/10W 0603 ROHS	1
R113,114	0700-063332-00	RES SMD 3.3KΩ ±5% 1/10W 0603 ROHS	2
R111,112	0700-063562-00	RES SMD 5.6KΩ ±5% 1/10W 0603 ROHS	2
MB	1121-506030-04 00	PCB D/S BT-CD5060 YMB ISO SOCKET 182.4X152.4X1.2MM	1
IC801	0300-007388-00	IC TDA7388 (4x40W) ST "Y" ROHS	1
ISO	1121-300031-43 00	ISO PCB D/S 39.9X44.2 X1.2MM (4X40W) COMMON	1
	2500-012245-36	CONNECTOR ISO FEMALE 36PIN P=1.5MM SW/RCA/CDC/AUX IN ROHS	1
TUNER	2901-000347-03	M.FAE347/P21/P22 EAST FUREPE 1 PACK 65-108MHJ	1
ANT	3100-086060-08	SINGLE SHIELD WIRE 60MM GREY ROHS	1
FUSE	3300-000338-00	FLAT TYPE (DIN FUSE) 15A BLUE ROHS	1
Q802,807,809,104,606	0100-000812-00	TR PNP 2SA812 SOT-23 KEC ROHS	5
Q817	0100-001385-00	KTA1385D-Y (DPAK) ROHS	1

ELECTRICAL PARTS LIST-CONTINUED

Ref. No.	Part No.	Description	Q'ty
Q607,703,801,803~806,808,816,818,820,107,201,202,203,330	0100-003875-07	TR NPN 2SC3875G SOT-23 NEC ROHS	16
D802	0200-004001-01	DIODE SMD IN-4001 SOD-106 TAPPING ROHS	1
D804,807,811	0200-004148-02	DIODE SMD RLS4148 LL-34 ROHM ROHS	3
ZD802	0200-050036-02	ZENER DIODE SMD 3.6V 0.5W ±2% LL-34 ROHS	1
ZD603	0200-050056-01	ZENER DIODE SMD 5.6V 0.5W ±2% LL-34 ROHS	1
ZD803	0200-050100-02	ZENER DIODE SMD 10V 0.5W ±5% LL-34 ROHS	1
IC606	0300-002313-00	I.C.PT2313L ROHS	1
IC701,702	0300-004558-16	I.C. BA4558F ROHS	2
IC805,806	0300-007805-02	IC LM78L05 (SOP-89) (ASB) ROHS	2
IC803	0300-007818-02	REGULATOR NJM78L18 SOT-89	1
IC101	0300-009257-00	IC SC9257 ROHS	1
	0300-081200-33	LDO 3.3V S-812C33AUA-C2N-T2 SOT-89-3 SEIKO ROHS	1
XT102	0400-000072-02	CRYSTAL 7.2MHZ HC-49US SMD CL=20PF ROHS	1
XT601	0400-000100-01	CRYSTAL HC-49U/SM 10MHZ(20PF PM) ROHS	1
C801~804,116,117	0500-003105-10	CER.CAP SMD 1uF 25V ±20% X7R 0805 ROHS	6
C614,619,624~627,660,830	0500-003225-10	CER.CAP SMD 2.2uF 25V ±20% X7R 1206 ROHS	8
C208,704,705,706	0500-016225-54	TAN CAP SMD 2.2uF 16V ±10% 3.2×1.6×1.6MM ROHS	5
C850	0500-016475-10	TAN CAP SMD 4.7uF 16V ±10% 3.2×1.6×1.6MM ROHS	1
C817	0500-063101-00	CER.CAP SMD 100PF 50V ±5% NPO 0603 ROHS	1
C603,604,607,668,805~808,108,147	0500-063102-01	CER.CAP SMD 1000PF 50V ±10% X7R 0603 ROHS	10
C628,635	0500-063103-01	CER.CAP SMD 0.01uF 50V ±10% X7R 0603 ROHS	2
C612,613,634,638,811,818,819,839,844,881,882,110,111	0500-063104-01	CER.CAP SMD 0.1uF 50V ±10% X7R 0603 ROHS	13
C665,666	0500-063150-00	CHIP CAP 15PF NPO 0603 SMT ROHS	2
C601,602	0500-063200-00	CER.CAP SMD 20PF 50V ±5% NPO 0603 ROHS	2
C119	0500-063220-00	CER.CAP SMD 22PF 50V ±5% NPO 0603 ROHS	1
C101,105,109,122,136,138,202	0500-063223-01	CER.CAP SMD 0.022uF 50V ±10% X7R 0603 ROHS	7
C620~623	0500-063224-01	CER.CAP SMD 0.22uF 16V ±10% X7R 0603 ROHS	4
C615,616	0500-063272-01	CER.CAP SMD 2700PF 50V ±10% X7R 0603 ROHS	2
C145,146	0500-063300-00	CER.CAP SMD 30PF 50V ±5% NPO 0603 ROHS	2
C814	0500-063474-02	CER.CAP SMD 0.47uF 16V +80/-20% X5R 0603 ROHS	1
C664,812,820,106	0600-016106-54	E.CAP SMD 10uF ±10% 16V ⌀ 4×5.5MM ROHS	4
C617,701,816,834~838,107	0600-016107-54	E.CAP SMD 100uF 16V ±10% ⌀ 6.3×5.5MM ROHS	9
C809	0600-016225-54	E.CAP 2.2uF .SMD ROHS	1
C618	0600-016226-54	E.CAP SMD 22uF 16V ±10% ⌀ 5×5.5MM ROHS	1

ELECTRICAL PARTS LIST-CONTINUED

Ref. No.	Part No.	Description	Q'ty
C702,606	0600-016227-54	E.CAP CHIP 220u/16V +/-10% ⌀ 6.3X7.6 ROHS	2
C813,845,102,125	0600-016476-54	E.CAP SMD 47uF 16V ±10% ⌀ 5×5.5MM ROHS	4
C711	0600-035336-54	E.CAP SMD 33uF 35V ±10% ⌀ 6.3×5.5MM ROHS	1
R888,889	0700-005102-54	RES SMD 1KΩ ±5% 1/10W 0805 ROHS	2
R17,18	0700-005221-54	RES SMD 220Ω ±5% 1/10W 0805 ROHS	2
L601	0700-012000-00	RES SMD 0Ω +/-5% 1/4W 1206 ROHS	1
R688-689	0700-012010-00	CHIP RES 1RHM 1206 1/4W SMT ROHS	2
R134	0700-012100-00	RES SMD 10Ω ±5% 1/4W 1206 ROHS	1
R854	0700-012470-00	CHIP RES 47R 1/4W 1206 SMT ROHS	1
R870	0700-063047-00	RES SMD 4.7Ω ±5% 1/10W 0603 ROHS	1
R620,103,140	0700-063100-00	RES SMD 10Ω ±5% 1/10W 0603 ROHS	3
R118,139	0700-063101-00	RES SMD 100Ω ±5% 1/10W 0603 ROHS	2
R631,632,716-719,101,120, 129,138,208	0700-063102-00	RES SMD 1KΩ ±5% 1/10W 0603 ROHS	11
R809~812,169,606,650,657 ,720,801-804,820,821,832,8 37,839,841~845,102,124,14 1,205,164	0700-063103-00	RES SMD 10KΩ ±5% 1/10W 0603 ROHS	30
R680,681,819,840	0700-063104-00	RES SMD 100KΩ ±5% 1/10W 0603 ROHS	4
R612,613,647	0700-063105-00	RES SMD 1M ±5% 1/10W 0603 ROHS	3
R147	0700-063124-00	RES SMD 120KΩ ±5% 1/10W 0603 ROHS	1
R818	0700-063152-00	RES SMD 1.5KΩ ±5% 1/10W 0603 ROHS	1
R830	0700-063182-00	RES SMD 1.8KΩ ±5% 1/10W 0603 ROHS	1
R814-817	0700-063184-00	RES SMD 180KΩ ±5% 1/10W 0603 ROHS	4
R604,122,130	0700-063222-00	RES SMD 2.2KΩ ±5% 1/10W 0603 ROHS	3
R702-703,805-808,813,829, 858,142	0700-063223-00	RES SMD 22KΩ ±5% 1/10W 0603 ROHS	10
R704,709,710,715	0700-063273-00	RES SMD 27KΩ ±5% 1/10W 0603 ROHS	4
R108	0700-063331-00	RES SMD 330Ω ±5% 1/10W 0603 ROHS	1
R629,630,652,653,658,659	0700-063332-00	RES SMD 3.3KΩ ±5% 1/10W 0603 ROHS	6
R849,675	0700-063333-00	RES SMD 33KΩ ±5% 1/10W 0603 ROHS	2
R649	0700-063334-00	RES SMD 330KΩ ±5% 1/10W 0603 ROHS	1
R850,207	0700-063471-00	RES SMD 470Ω ±5% 1/10W 0603 ROHS	2
R633,634,831,109,121,125, 890	0700-063472-00	RES SMD 4.7KΩ ±5% 1/10W 0603 ROHS	7
R645,706,707,712,713,825, 846,847,892,654,119,136,1 37,145	0700-063473-00	RES SMD 47KΩ ±5% 1/10W 0603 ROHS	14
R655,656	0700-063681-00	RES SMD 680Ω ±5% 1/10W 0603 ROHS	2
R705,708,711,714,206	0700-063822-00	RES SMD 8.2KΩ ±5% 1/10W 0603 ROHS	5
L602	0900-000101-54	INDUCTOR 100uH SMD 1210 ROHS	1
L803	0900-070100-54	CHIP WIREING 10uF SMD 1210 ROHS	1
CON602	2500-506023-00	SOCKET SMD 23PIN P=1.0MM TOP-CONTACT ROHS	1
Q810	0100-000435-00	TR NPN BD435S TO-126 FAIRCHLD ROHS	1
D801	0200-005401-00	DIODE IN5401 DO-27 ROHS	1

ELECTRICAL PARTS LIST-CONTINUED

Ref. No.	Part No.	Description	Q'ty
XT602	0400-000327-00	CRYSTAL 32.768KHZ +/-20PPM ZDT-38(§ 3X8MM) 12.5PF SW-0227 ROHS	1
C810	0600-016338-00	E.CAP 3300uF 16V ±20% § 13×25MM ROHS	1
L801	1500-027012-11	TOROIDAL COIL XC-169-110uH V-TYPE § 27×12MM Xin- DeXing ROHS	1
RESET-SW	1600-001138-00	TACT SWITCH FOR DVD248 RESET ROHS	1
PC BOARD ASSY, MAIN BOARD AM TUNER SECTION			
Q205	0100-003875-07	TR NPN 2SC3875G SOT-23 NEC ROHS	1
C206,207	0500-063103-01	CER.CAP SMD 0.01uF 50V ±10% X7R 0603 ROHS	2
C201,203	0500-063223-01	CER.CAP SMD 0.022uF 50V ±10% X7R 0603 ROHS	2
C204	0600-016106-54	E.CAP SMD 10uF ±10% 16V § 4×5.5MM ROHS	1
R209	0700-063100-00	RES SMD 10Ω ±5% 1/10W 0603 ROHS	1
R201,203	0700-063103-00	RES SMD 10KΩ ±5% 1/10W 0603 ROHS	1
R202	0700-063331-00	RES SMD 330Ω ±5% 1/10W 0603 ROHS	1
L201	0900-000047-54	INDUCTOR 4.7uH SMD 1210 ROHS	1
PC BOARD ASSY, KEY BOARD			
ZD601	0200-000062-07	E.S.D.DIODE SMD NNCD6.2G SOT23-5L ROHS	1
LED4	0200-001112-02	LED SMD RED LUM=25MCD WL=626NM 0805 STLNLEY ROHS	1
LED22	0200-001112-05J	LED SMD PURE-GREEN LUM=25MCD WL=525NM 0805 WENRUN ROHS	1
LED1-3,5-21	0200-001112-06 M	LED SMD BLUE WL=14.5MCD WL=470NM 0805 ROHS	20
D1	0200-004148-02	DIODE SMD RLS4148 LL-34 ROHM ROHS	1
IC601	0300-000091-10	IC MN101CF91D ORIT RUSSIAN FONTS TQFP048-P-0707B PANASOHC ROHS	1
X1	0400-000100-01	CRYSTAL HC-49U/SM 10MHZ(20PF PM) ROHS	1
C11~20	0500-003105-10 M	CER.CAP SMD 1uF 25V ±20% X7R 0805 ROHS	10
C10	0500-016475-10	TAN CAP SMD 4.7uF 16V ±10% 3.2×1.6×1.6MM ROHS	1
C8	0500-063104-01	CER.CAP SMD 0.1uF 50V ±10% X7R 0603 ROHS	1
C1~C5	0500-063220-00	CER.CAP SMD 22PF 50V ±5% NPO 0603 ROHS	5
C601	0500-063223-01	CER.CAP SMD 0.022uF 50V ±10% X7R 0603 ROHS	1
C6	0600-010476-55	TAN CAP CMD 47uF 10V ±10% 3.5×2.8×1.9MM ROHS	1
R24~28	0700-063102-00	RES SMD 1KΩ ±5% 1/10W 0603 ROHS	5
R35,40	0700-063103-00	RES SMD 10KΩ ±5% 1/10W 0603 ROHS	2
R7,609	0700-063152-00	RES SMD 1.5KΩ ±5% 1/10W 0603 ROHS	2
R1,2,22,605	0700-063221-00	RES SMD 220Ω ±5% 1/10W 0603 ROHS	4
R9,623	0700-063222-00	RES SMD 2.2KΩ ±5% 1/10W 0603 ROHS	2
R3,10,606	0700-063271-00	RES SMD 270Ω ±5% 1/10W 0603 ROHS	3
R14-18,21,651-658,639,639 A	0700-063331-00	RES SMD 330Ω ±5% 1/10W 0603 ROHS	16
R19,20,23	0700-063332-00	RES SMD 3.3KΩ ±5% 1/10W 0603 ROHS	3
R4,11,607	0700-063391-00	RES SMD 390Ω ±5% 1/10W 0603 ROHS	3

ELECTRICAL PARTS LIST-CONTINUED

Ref. No.	Part No.	Description	Q'ty
R5,12,610	0700-063561-00	RES SMD 560Ω ±5% 1/10W 0603 ROHS	3
R8,625	0700-063562-00	RES SMD 5.6KΩ ±5% 1/10W 0603 ROHS	2
R6,13,613	0700-063821-00	RES SMD 820Ω ±5% 1/10W 0603 ROHS	3
L1	0900-070100-54	CHIP WIREING 10uF SMD 1210 ROHS	1
KB	1121-506030-30	PCB D/S BT-CD5060 DOT LCD 132×40 KB	1
SW	1600-001140-04	SWITCH TACT SMD KPS-1107SW	17
	A	6.1×3.7×2.5MM TAPPING ROHS	
	1600-021130-01	TACT SW DT2113CH 250G/4.3 SMD RED D.S	5
CON1	2500-0M0217-20	CONNECTOR SMD MALE 20PIN P=2.0MM	1
		H-TYPE EASTSUN ROHS	
CON601	2500-506022-01	SOCKET SMD 22PIN P=1.0MM BOT-CONTACT	1
		ROHS	
LED	0200-506009-00	LED BACKLIGHT WHITE 85.5X23MM YUHUA	1
		ROHS	
MIC	1400-602706-00	MIC DKO-6027C-P19-42DB § 6X.3.4 W/30MM	1
		WIRE WEEFANG ROHS	
USB	2500-002174-01	USB SOCKET H-TYPE DAYKING ROHS	1
LCD1	2700-506030-02	LCM FSTN POS COG132040A00-FKN-R	1
	0L	80X29X2.8MM BT- CD5060 ROHS	
PC BOARD ASSY, SDK/CD SERVO BOARD			
Q304,603	0100-000812-00	TR PNP 2SA812 SOT-23 KEC ROHS	2
Q109,303	0100-003875-07	TR NPN 2SC3875G SOT-23 NEC ROHS	2
D616	0200-004148-02	DIODE SMD RLS4148 LL-34 ROHM ROHS	1
ZD301	0200-050091-01	ZENER DIODE SMD 9.1V 0.5W ±5% LL-34 ROHS	1
C301,302	0500-003225-10	CER.CAP SMD 2.2uF 25V ±20% X7R 1206 ROHS	2
C303,304	0600-016107-54	E.CAP SMD 100uF 16V ±10% § 6.3×5.5MM	2
		ROHS	
R305,317,610	0700-063103-00	RES SMD 10KΩ ±5% 1/10W 0603 ROHS	3
R311	0700-063221-00	RES SMD 220Ω ±5% 1/10W 0603 ROHS	1
R303,304,309	0700-063222-00	RES SMD 2.2KΩ ±5% 1/10W 0603 ROHS	3
R318	0700-063224-00	RES SMD 220KΩ ±5% 1/10W 0603 ROHS	1
R301,302	0700-063332-00	RES SMD 3.3KΩ ±5% 1/10W 0603 ROHS	2
R678	0700-063333-00	RES SMD 33KΩ ±5% 1/10W 0603 ROHS	1
R25~27,307,310	0700-063473-00	RES SMD 47KΩ ±5% 1/10W 0603 ROHS	5
Q305	0100-000435-00	TR NPN BD435S TO-126 FAIRCHLD ROHS	1
	S		
CON301	2500-011101-20	20PIN FPC-H1.25 TOP CON	1
		(NEGATIVE-NEEDIE) ROHS	
Q4	0100-008050-05	TR 8050 SOT23 NPN	1
Q1,2	0100-008550-06	TR SS8550 PNP SOT23 ROHS	2
Z1	0200-050056-01	ZENER DIODE SMD 5.6V 0.5W ±2% LL-34 ROHS	1
IC3	0300-000956-00	IC MN6627956 LQFP100-P-1414 PANASONIC	1
		ROHS	
IC6	0300-001117-01	FIX 3.3V VOLTAGE REGVLATER AMS1117-3.3	1
		ROHS	
IC2	0300-001616-00	IC 1*16 W9816G6CH-6 TSOP II-50PIN ROHS	1
IC4	0300-006889-00	IC OTI6889 LQFP128 OTI ROHS	1
IC1	0300-009259-00	IC SC9259 (SILAN) ROHS	1
	S		

ELECTRICAL PARTS LIST-CONTINUED

Ref. No.	Part No.	Description	Q'ty
IC5	0300-039010-00	IC W39F010P-70B (PLCC-32PIN) ROHS	1
C1,2,76,175	0500-016106-10	TAN CAP SMD 10uF 16V ±10% 3.2×1.6×1.6MM ROHS	4
C51	0500-016475-10	TAN CAP SMD 4.7uF 16V ±10% 3.2×1.6×1.6MM ROHS	1
C11,20,68	0500-063102-01	CER.CAP SMD 1000PF 50V ±10% X7R 0603 ROHS	3
C3,9,10,13,14,15,23,24,27,30,35,36,38,41,52,53,58,59,62,69,71~75,174,176~186,198	0500-063104-01	CER.CAP SMD 0.1uF 50V ±10% X7R 0603 ROHS	38
C55,56,170,171	0500-063150-00	CHIP CAP 15PF NPO 0603 SMT ROHS	4
C6~7	0500-063152-01	CER.CAP SMD 1500PF 50V ±10% X7R 0603 ROHS	2
C67	0500-063153-01	CER.CAP SMD 0.015uF 50V ±10 X7R 0603 ROHS	1
C16,19	0500-063222-01	CER.CAP SMD 2200PF 50V ±10% X7R 0603 ROHS	2
C21,47	0500-063223-01	CER.CAP SMD 0.022uF 50V ±10% X7R 0603 ROHS	2
C22	0500-063224-01	CER.CAP SMD 0.22uF 16V ±10% X7R 0603 ROHS	1
C48	0500-063332-01	CER.CAP SMD 3300PF 50V ±10% X7R 0603 ROHS	1
C49	0500-063334-01	CER.CAP SMD 0.33uF 25V X7R ±10% 0603 ROHS	1
C43,44	0500-063471-00	CER.CAP SMD 470PF 50V ±5% NPO 0603 ROHS	2
C4,5	0500-063472-01	CER.CAP SMD 4700PF 50V ±10% X7R 0603 ROHS	2
C60	0500-063681-00	CER.CAP SMD 680PF 50V ±5% NPO 0603 ROHS	1
C70	0500-063823-01	CHIP 82000PF ±10% X7R 0603 SMT ROHS	1
C12,17,26,61	0600-016107-54	E.CAP SMD 100uF 16V ±10% § 6.3×5.5MM ROHS	4
C8,18,25,33,39,50,54,187	0600-016476-54	E.CAP SMD 47uF 16V ±10% § 5×5.5MM ROHS	8
C197	0600-063107-55	TAN CAP SMD 100uF 6.3V ±20% 3.5×2.8×2.0MM ROHS	1
R19	0700-012100-00	RES SMD 10Ω ±5% 1/4W 1206 ROHS	1
R31,36,49,52,53,56,61,64	0700-063000-00	RES SMD 0Ω ±5% 1/10W 0603 ROHS ROHS	8
R3,8	0700-063033-00	CHIP RES 3.3Ω ±5% 0603 SMT ROHS	2
R63,323	0700-063100-00	RES SMD 10Ω ±5% 1/10W 0603 ROHS	2
R5,10~13,16,18,20,21,24,28,32,33,39,42,57,70,72,217,223,238	0700-063102-00	RES SMD 1KΩ ±5% 1/10W 0603 ROHS	21
R22,222,250~253,256,257	0700-063103-00	RES SMD 10KΩ ±5% 1/10W 0603 ROHS	8
R71	0700-063104-00	RES SMD 100KΩ ±5% 1/10W 0603 ROHS	1
R58,219	0700-063105-00	RES SMD 1M ±5% 1/10W 0603 ROHS	2
R15	0700-063124-00	RES SMD 120KΩ ±5% 1/10W 0603 ROHS	1
R59	0700-063151-00	RES SMD 150Ω ±5% 1/10W 0603 ROHS	1
R237	0700-063152-00	RES SMD 1.5KΩ ±5% 1/10W 0603 ROHS	1
R35,54,55	0700-063153-00	RES SMD 15KΩ ±5% 1/10W 0603 ROHS	3
R40,41	0700-063222-00	RES SMD 2.2KΩ ±5% 1/10W 0603 ROHS	2
R44,45	0700-063272-00	RES SMD 2.7KΩ ±5% 1/10W 0603 ROHS	2

ELECTRICAL PARTS LIST-CONTINUED

Ref. No.	Part No.	Description	Q'ty
R9,14	0700-063332-00	RES SMD 3.3KΩ ±5% 1/10W 0603 ROHS	2
R324	0700-063391-00	RES SMD 390Ω ±5% 1/10W 0603 ROHS	1
R322,37	0700-063471-00	RES SMD 470Ω ±5% 1/10W 0603 ROHS	2
R46,48	0700-063472-00	RES SMD 4.7KΩ ±5% 1/10W 0603 ROHS	2
R4,23	0700-063473-00	RES SMD 47KΩ ±5% 1/10W 0603 ROHS	2
R1,2,6,7	0700-063681-00	RES SMD 680Ω ±5% 1/10W 0603 ROHS	4
R17	0700-063820-00	RES SMD 82Ω ±5% 1/10W 0603 ROHS	1
R66	0700-063821-00	RES SMD 820Ω ±5% 1/10W 0603 ROHS	1
R65	0700-063823-00	RES SMD 82KΩ ±5% 1/10W 0603 ROHS	1
R30	0700-063912-00	RES SMD 9.1KΩ ±5% 1/10W 0603 ROHS	1
DB1,2	0900-000601-01	CHIP BEAD 601 100M BG1608 ROHS	2
L1,3,4,5	0900-070100-54	CHIP WIREING 10uF SMD 1210 ROHS	4
	1121-506030-21 00	PCB D/S BT-CD5060 SB 94×95×1.2MM	1
USB+SD	2500-016125-01	SOCKET SMD 16PIN P=1.25 1.25T-2-16PWB JINSHZ ROHS	1
CN1	2500-016300-17	17PIN FPC 6224-017-001-800 ROHS	1
D1,2	0200-000144-00	IR LED MIE 144A1MC ROHS	2
XT2	0400-000120-02	CRYSTAL OSCILLATOR 12MHZ ±30PPM HC-49U/S ROHS	1
XT1	0400-000169-00 R	CRYSTAL OSCILLATOR 16.9344MHZ±30PPM HC-49U/S ROHS	1
SW1	1600-000111-00	SWITCH PUSH LEVER SW-111 8×5.3×3.8MM SHINMEI ROHS	1
CON1	2500-000090-03	RAINBOW WIRE 90MM 3PIN AWG30# ROHS	1
J2	2500-009286-20	20PIN FFC-B 1.25 L=130MM ROHS	1
J1	2500-053015-20 E	SOCKET 4PIN CD DECK BoMu ROHS	1
DECK(3)	4000-002004-03	SCREW § 2X4 BH TAPTITE ROHS	3
	8100-010006-00	DECK CABLE PAD (36X10X0.5) ROHS	2
	8700-000690-07	LASER CAUTION LABEL ROHS	1
	8700-008168-03	LASER BEAM LABEL ROHS	1
CHUDONG	9400-001684-13 C	DECK CDM-1624EUK(SF-CP2)CHUDONG (R01-3A) ROHS	1
PC BOARD ASSY, MAIN BOARD LINE OUT SECTION			
C707,708	0500-003105-10 M	CER.CAP SMD 1uF 25V ±20% X7R 0805 ROHS	2
R721,722	0700-063222-00	RES SMD 2.2KΩ ±5% 1/10W 0603 ROHS	2
PC BOARD ASSY, FRONT BOARD			
Q1,DQ1	0100-003875-07	TR NPN 2SC3875G SOT-23 NEC ROHS	2
LED LED1	0200-001112-02	LED SMD RED LUM=25MCD WL=626NM 0805 STLNLEY ROHS	2
D1,2	0200-004148-02	DIODE SMD RLS4148 LL-34 ROHM ROHS	2
R2,9	0700-005331-54	RES SMD 330Ω ±5% 1/10W 0805 ROHS	2
R12	0700-063000-00	RES SMD 0Ω ±5% 1/10W 0603 ROHS ROHS	1
DR1,R3	0700-063102-00	RES SMD 1KΩ ±5% 1/10W 0603 ROHS	2
DR2,R1,R6	0700-063473-00	RES SMD 47KΩ ±5% 1/10W 0603 ROHS	3

ELECTRICAL PARTS LIST-CONTINUED

Ref. No.	Part No.	Description	Q'ty
FB/EJ BOARD	1121-506030-36	PCB D/S BT-CD5060 FB/EJ 99.9X27.6X1.2MM	1
EJECT	00 1600-001140-04	SWITCH TACT SMD KPS-1107SW	1
CON2	A 2500-506023-01	6.1×3.7×2.5MM TAPPING ROHS	1
LED2	0200-030000-12	FFC 23PIN P=1.0MM L=60MM ROHS	1
DTHSW	1600-051377-00	LED RED LUM=0.6MCD WL=690NM § 3MM	1
CON1	K 2500-0F0217-20	WIDE ANGLE ROHS	1
FB TO EJB	A 3100-070090-01	SWITCH PUSH SPPB51377A(DS-20)	1
FB TO EJB	3100-070090-02	6.3×3×8.5MM KONEX ROHS	1
FB TL EJB	3100-070090-03	CONNECTOR FEMALE20PIN P=2.0MM V-TYPE	1
FB TO EJB	3100-070090-04	EAST SUN ROHS	1
		7X1.05 PVC WIRE 90MM BROWN ROHS	1
		7X1.05 PVC WIRE 90MM RED ROHS	1
		7X1.05 PVC WIRE 90MM ORN ROHS	1
		7X1.05 PVC WIRE 90MM YELLOW ROHS	1
PC BOARD ASSY, BLUETOOTH BOARD			
Q334	0100-001298-00	TR PNP KTA1298 SOT-23 KEC ROHS	1
Q333	0100-003875-07	TR NPN 2SC3875G SOT-23 NEC ROHS	1
D614	0200-004148-02	DIODE SMD RLS4148 LL-34 ROHM ROHS	1
C330	0500-003105-10	CER.CAP SMD 1uF 25V ±20% X7R 0805 ROHS	1
C334	M 0500-063104-01	CER.CAP SMD 0.1uF 50V ±10% X7R 0603 ROHS	1
C335,336	0500-063152-01	CER.CAP SMD 1500PF 50V ±10% X7R 0603	2
C331	0600-016107-54	ROHS E.CAP SMD 100uF 16V ±10% § 6.3×5.5MM	1
R332,333	0700-063100-00	ROHS RES SMD 10Ω ±5% 1/10W 0603 ROHS	2
R334	0700-063101-00	RES SMD 100Ω ±5% 1/10W 0603 ROHS	1
R330,331	0700-063102-00	RES SMD 1KΩ ±5% 1/10W 0603 ROHS	2
R338,340	0700-063103-00	RES SMD 10KΩ ±5% 1/10W 0603 ROHS	2
R679	0700-063104-00	RES SMD 100KΩ ±5% 1/10W 0603 ROHS	1
R339	0700-063472-00	RES SMD 4.7KΩ ±5% 1/10W 0603 ROHS	1
R20	0700-063473-00	RES SMD 47KΩ ±5% 1/10W 0603 ROHS	1
Q8	2900-000030-20	BLUETOOTH MODULE HSM3.0 "NGA-P20"	1
Q5-7	0100-000812-00	COLLEX W/A2DP W/O SMS ROHS	1
IC1	0100-003904-00	TR PNP 2SA812 SOT-23 KEC ROHS	1
IC3	0300-004558-16	TR NPN 2N3904 SOT-23 ROHS	3
C18,21	0300-006209-33	I.C. BA4558F ROHS	1
C22	0500-003105-10	IC XC6209A332MR 3.3V SOT23-5	1
C6,14	M 0500-003225-10	CER.CAP SMD 1uF 25V ±20% X7R 0805 ROHS	2
C1-4,7-8,25	0500-016106-10	CER.CAP SMD 2.2uF 25V ±20% X7R 1206 ROHS	1
C24,27	0500-016475-10	TAN CAP SMD 10uF 16V ±10% 3.2×1.6×1.6MM	2
C26	0500-063103-01	ROHS TAN CAP SMD 4.7uF 16V ±10% 3.2×1.6×1.6MM	7
C15-16,C23	0500-063104-01	ROHS CER.CAP SMD 10PF 50V ±5% NPO 0603 ROHS	2
		CER.CAP SMD 0.01uF 50V ±10% X7R 0603	1
		ROHS CER.CAP SMD 0.1uF 50V ±10% X7R 0603 ROHS	3

ELECTRICAL PARTS LIST-CONTINUED

Ref. No.	Part No.	Description	Q'ty
C13	0500-063150-00	CHIP CAP 15PF NPO 0603 SMT ROHS	1
C9-12	0500-063473-01	CER.CAP SMD 0.047uF 50V ±10% X7R 0603 ROHS	4
C5	0600-063107-55	TAN CAP SMD 100uF 6.3V ±20% 3.5×2.8×2.0MM ROHS	1
L2	0700-005000-51 D	CHIP RES ON 1/8W 1206 +/-5% ROHS	1
R38,42	0700-063000-00	RES SMD 0Ω ±5% 1/10W 0603 ROHS ROHS	2
R1-2,11,44	0700-063100-00	RES SMD 10Ω ±5% 1/10W 0603 ROHS	4
R14,15	0700-063102-00	RES SMD 1KΩ ±5% 1/10W 0603 ROHS	2
R19,22	0700-063104-00	RES SMD 100KΩ ±5% 1/10W 0603 ROHS	2
R21,24	0700-063105-00	RES SMD 1M ±5% 1/10W 0603 ROHS	2
R20,23	0700-063154-00	RES SMD 150KΩ ±5% 1/10W 0603 ROHS	2
R25	0700-063222-00	RES SMD 2.2KΩ ±5% 1/10W 0603 ROHS	1
R3-8,10,12-13,27,45	0700-063223-00	RES SMD 22KΩ ±5% 1/10W 0603 ROHS	11
R31	0700-063224-00	RES SMD 220KΩ ±5% 1/10W 0603 ROHS	1
R16,17	0700-063471-00	RES SMD 470Ω ±5% 1/10W 0603 ROHS	2
R37,39-41,43,46	0700-063472-00	RES SMD 4.7KΩ ±5% 1/10W 0603 ROHS	6
R9	0700-063473-00	RES SMD 47KΩ ±5% 1/10W 0603 ROHS	1
R30	0700-063474-00	RES SMD 470KΩ ±5% 1/10W 0603 ROHS	1
R32	0700-063513-00	RES SMD 51KΩ ±5% 1/10W 0603 ROHS	1
L1	0900-031601-00	EMIFIL (SMD) BLM31P601SG ROHS	1
	1121-506030-14 00	PCB D/S BT-CD5060 BT-MODULE 40X40X1.2MM	1
	2300-506045-00	ANT 2.4G L=45MM EXCELTEK ROHS	1
CON1	2500-506003-00	SOCKET MALE 3PIN P=2.54 ALLTOP ROHS	1
CON1	2500-506007-00	SOCKET MALE 7PIN P=2.54 ALLTOP ROHS	1

SPECIFICATIONS

T. H. D.....	Less than 0.35%
Signal to Noise Ratio	More than 60 dB
Channel Separation	More than 60 dB
Frequency Response	20Hz-20kHz
Stereo Separating (FM)	30 dB (at 1kHz)
Signal to Noise Ratio (FM)	Better than 50 dB
Output Power	4 X 40W
Speaker Output Impedance.....	4 To 8 ohm
Power Source	DC 12V, Negative ground.
Frequency Range	FM 65.0 – 74.0MHz (FM 87.5 – 108.0MHz)
.....	MW 530-1710 kHz
Sensitivity.....	FM 3 μ V (S/N=30dB)
.....	MW 32 dB μ (S/N=20 dB)

Specifications are subject to change without notice.